

试卷编号: B 卷

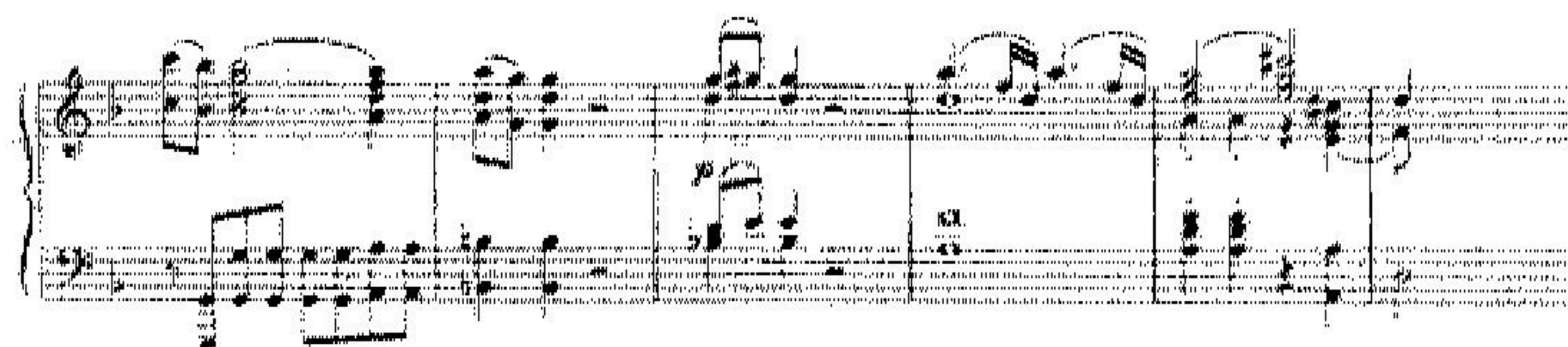
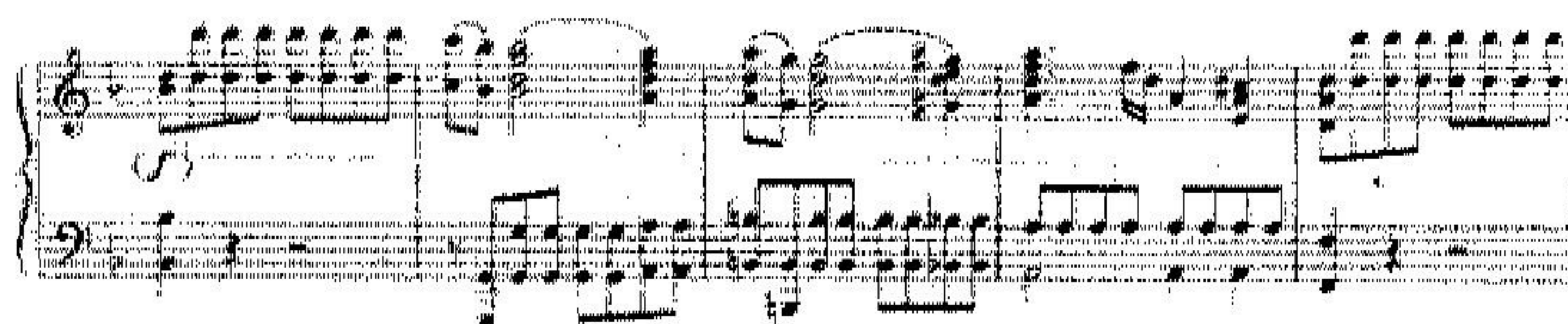
河南师范大学 二〇一〇年硕士研究生入学考试业务课试卷

科目代码: 666 名称: 和声学 适用专业或方向: 音乐学专业各方向

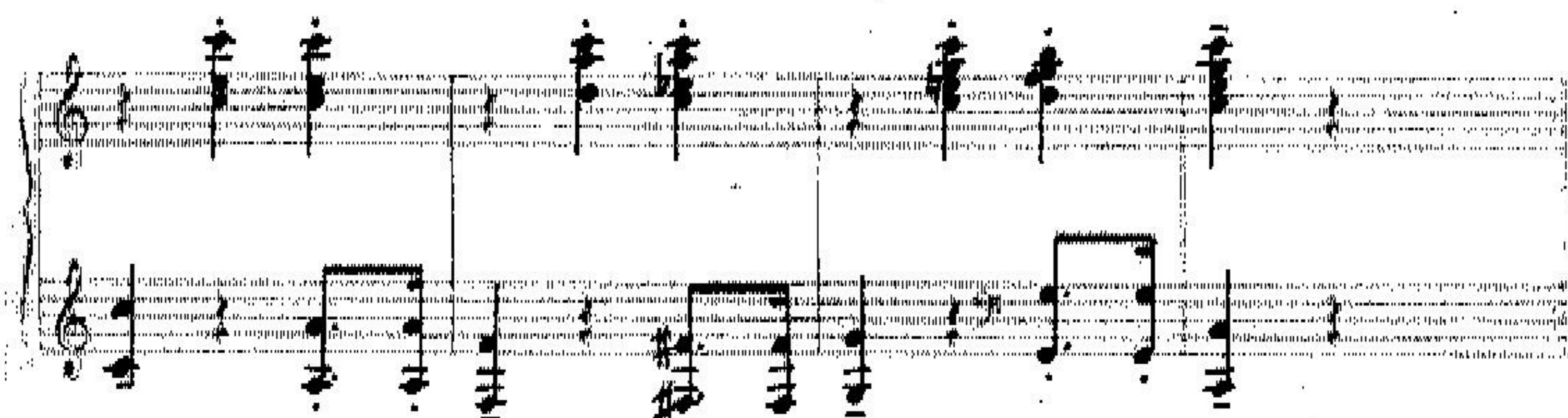
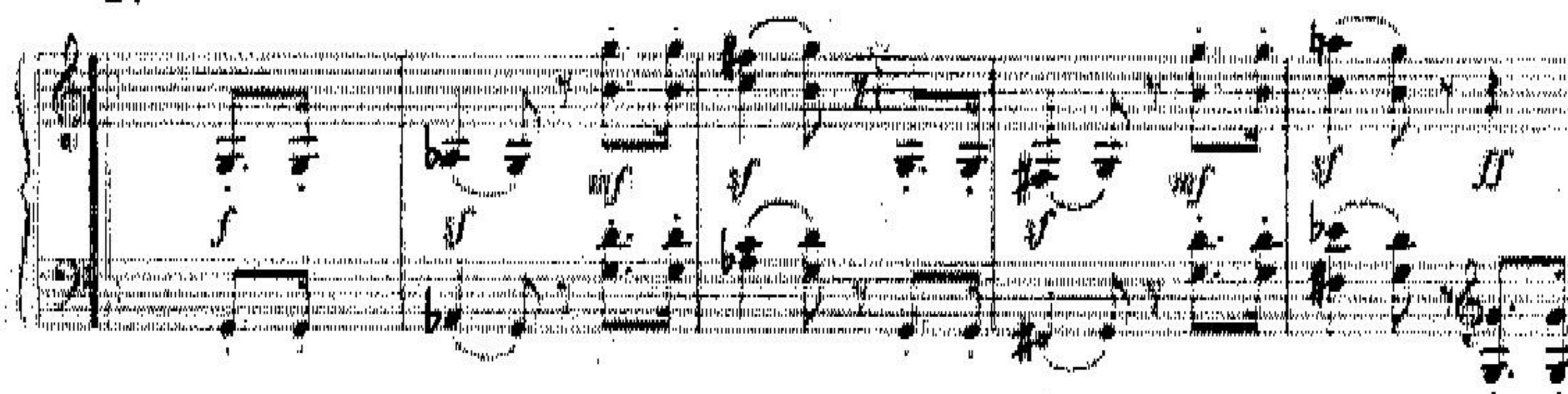
(必须在答题纸上答题, 在试卷上答题无效, 答题纸可向监考老师索要)

一、和声分析 (每题 25 分, 共 50 分)

1、



2、



二、为旋律线配和声（共 60 分）

Two systems of musical notation for harmonic accompaniment. Each system consists of a grand staff with a treble and bass clef. The first system has a melody in the treble clef with a key signature of one sharp (F#) and a 4/4 time signature. The melody consists of 12 measures. The second system has a melody in the treble clef with a key signature of one flat (Bb) and a 4/4 time signature. The melody consists of 12 measures.

三、为低音旋律配四部和声（共 40 分）

Two systems of musical notation for four-part harmony. Each system consists of a grand staff with a treble and bass clef. The first system has a bass line in the bass clef with a key signature of one sharp (F#) and a 4/4 time signature. The bass line consists of 12 measures. The second system has a bass line in the bass clef with a key signature of one flat (Bb) and a 4/4 time signature. The bass line consists of 12 measures.