

## 聊城大学 2011 年硕士研究生入学考试初试试题

考试科目 817 和声曲式分析

A 卷

适用专业 音乐

注意事项: 1、本试卷共四页, 答题时, 请各考生注意。

2、本卷为试题, 答题时, 请在答题卡上作答, 在本试卷上作答无效。

3、答题时必须用笔, 用铅笔作答无效, 其它均无效。

4、特殊要求: 答题时, 请各考生注意, 答题时, 请各考生注意。

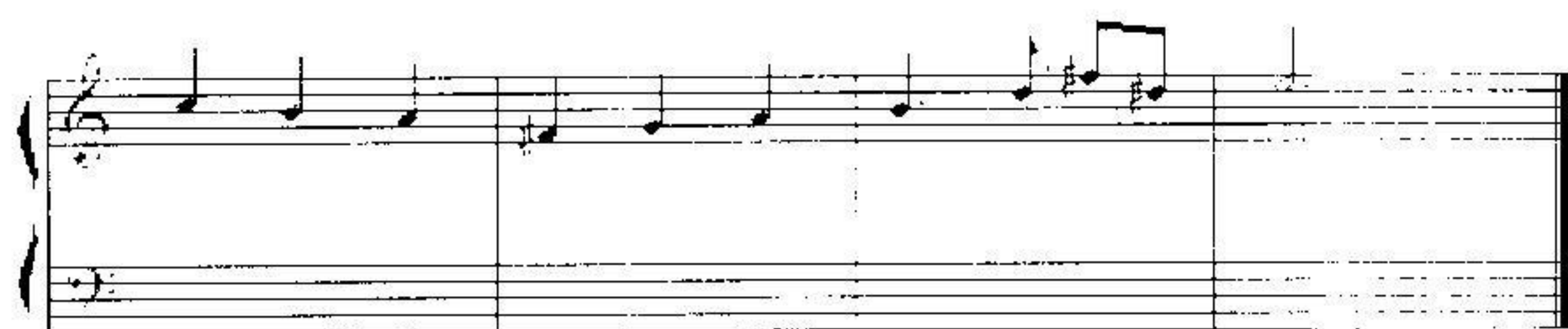
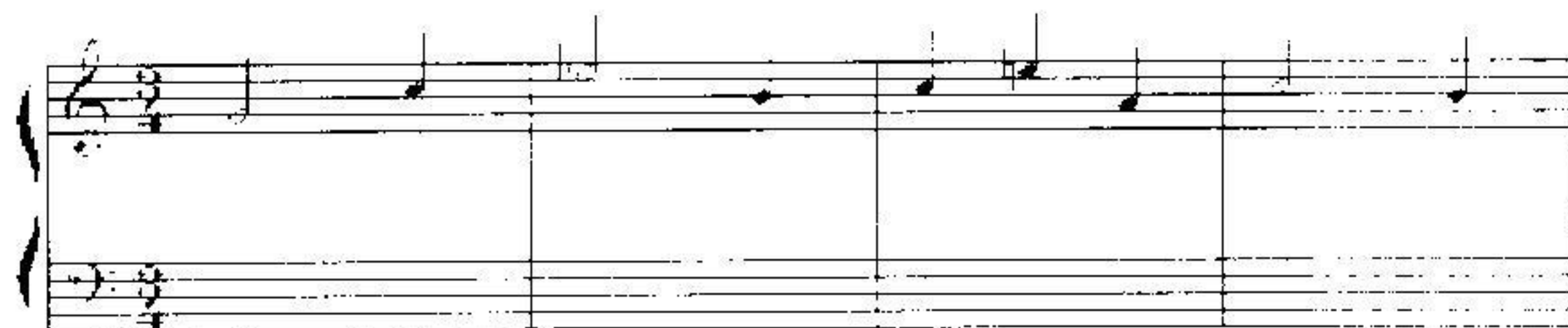
一、构造和弦: 用四部和声方式写出, 在方格内写出, 每个音符写, 方格内为指定调性, 每个 1 分, 共 20 分: (此题考和声写作, 请在方格内写出)

F 小调 VII 级 (大三和弦) IV 级 (大三和弦) I 级 (大三和弦) V 级 (大三和弦) II 级 (大三和弦)

二、和声分析题: 方格内填写和弦, 横线内填写和弦功能, 请按顺序写, 各 1 分, 共 20 分。



三、为旋律配和声：标明调性及和弦功能，如有转调请用字母中介和弦和弦号标注，共35分；此题考生在答题纸上写画（线谱）。



四、分析谱例，按要求答题（共75分）

1. 写出该作品的曲式结构类型（5分）

2. 画出结构图示（20分）

3. 文字分析（包括各部分的段落分析，主题特点分析以及对该作品的总体评价，共50分）

Handwritten notation: **A**

Handwritten musical score system 1. It consists of a treble and bass staff. The treble staff has a handwritten 'A' above it. The bass staff has a handwritten 'pp' below it. The music is in 3/4 time and features a series of eighth notes in the bass and a melody in the treble.

Handwritten notation: **8**

Handwritten musical score system 2. It consists of a treble and bass staff. The treble staff has a handwritten '8' above it. The bass staff has a handwritten 'pp' below it. The music is in 3/4 time and features a series of eighth notes in the bass and a melody in the treble.

Handwritten notation: **A**

Handwritten musical score system 3. It consists of a treble and bass staff. The treble staff has a handwritten 'A' above it. The bass staff has a handwritten 'pp' below it. The music is in 3/4 time and features a series of eighth notes in the bass and a melody in the treble.

Handwritten notation: **10**

Handwritten musical score system 4. It consists of a treble and bass staff. The treble staff has a handwritten '10' above it. The bass staff has a handwritten 'pp' below it. The music is in 3/4 time and features a series of eighth notes in the bass and a melody in the treble.

Handwritten notation: **15**

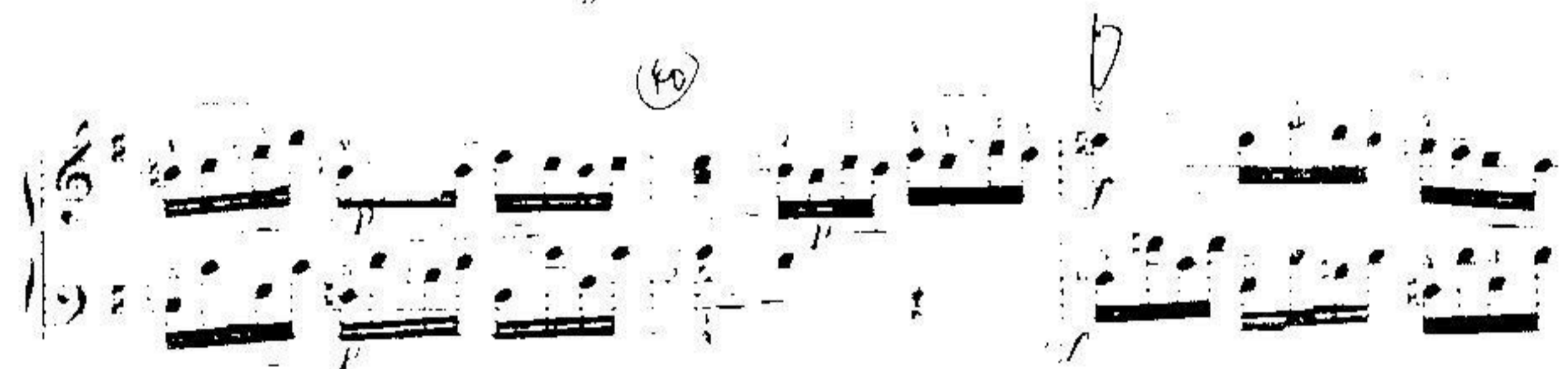
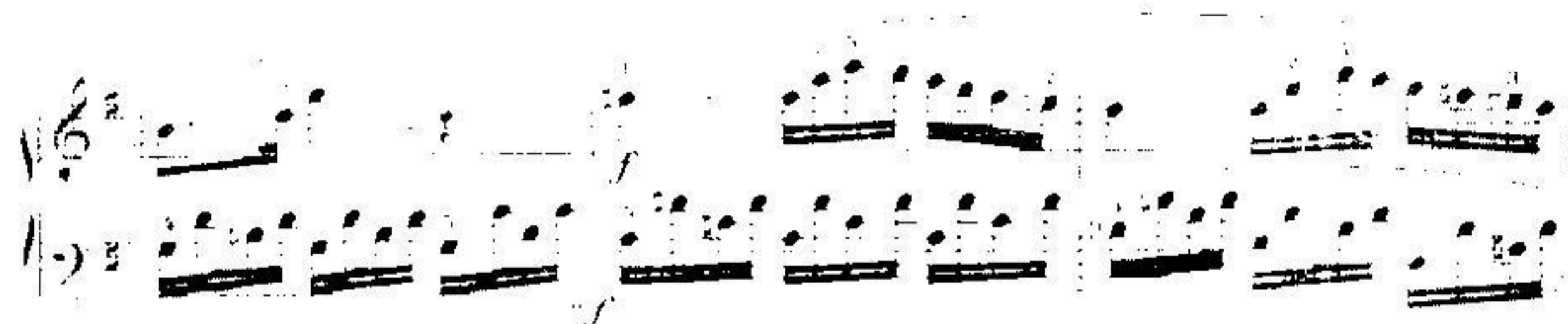
Handwritten musical score system 5. It consists of a treble and bass staff. The treble staff has a handwritten '15' above it. The bass staff has a handwritten 'pp' below it. The music is in 3/4 time and features a series of eighth notes in the bass and a melody in the treble.



B

C

33

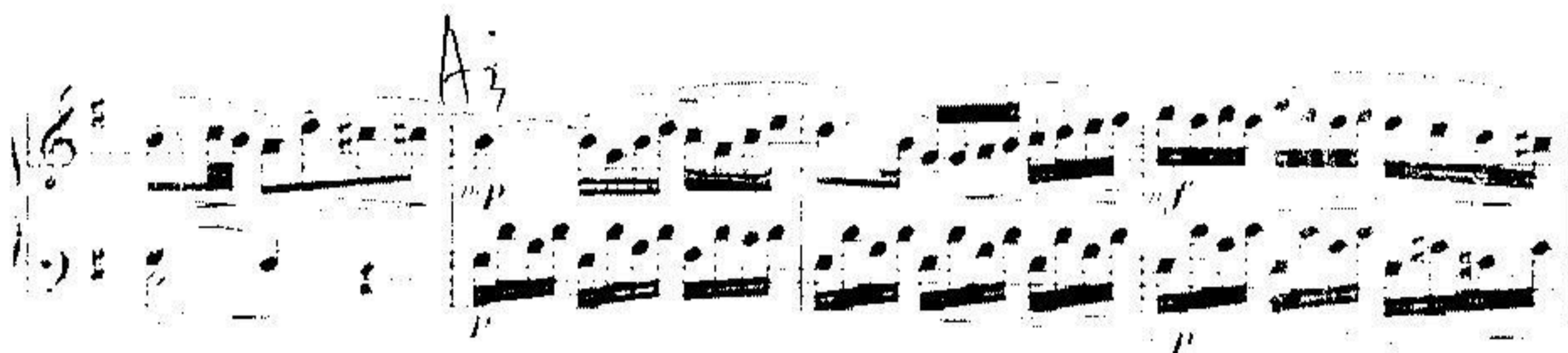
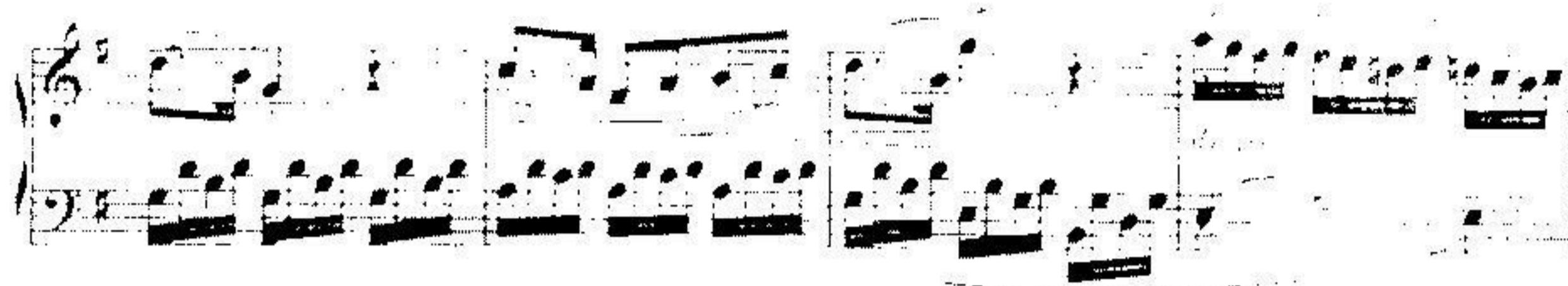


A A2

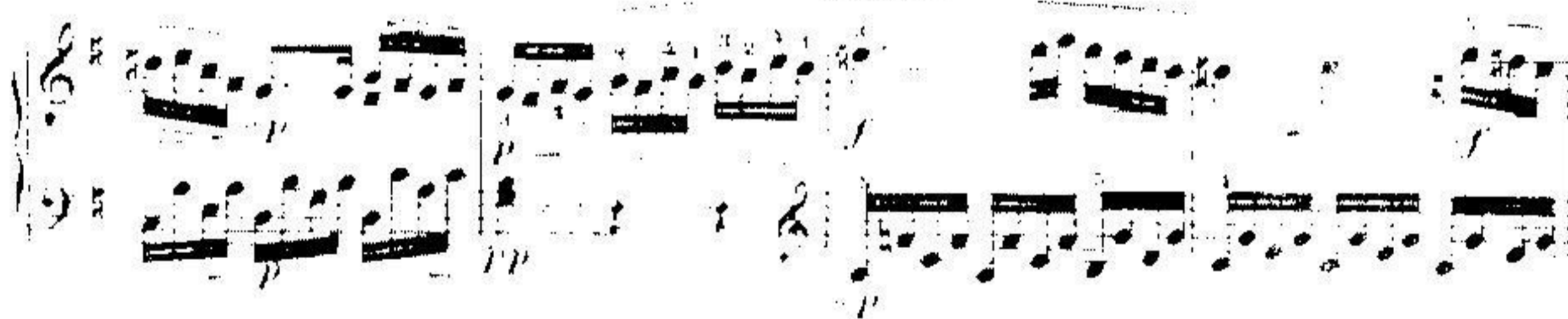
50



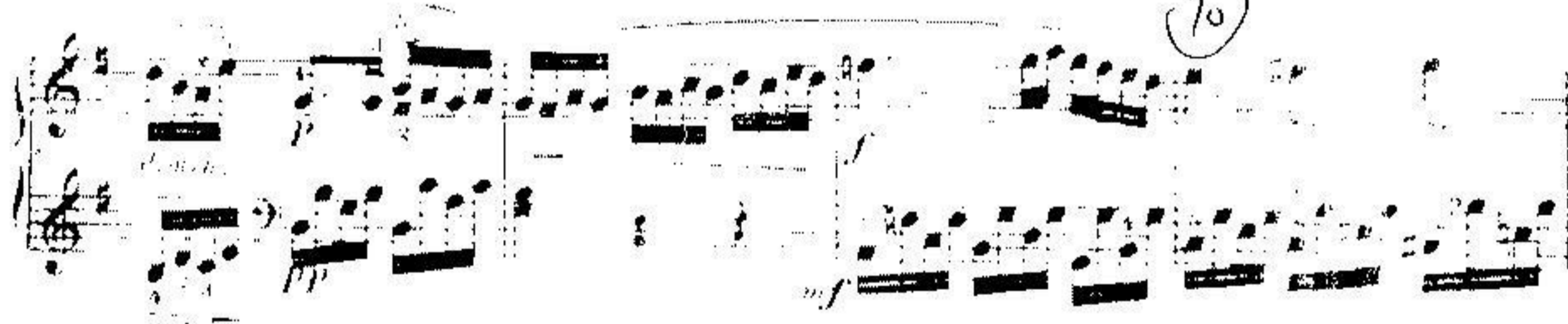
55



65



70



74

