

浙江师范大学 2010 年硕士研究生入学考试初试试题

科目代码： 861 科目名称： 艺术综合

适用专业： 050402 音乐学、050403 美术学、050407 广播电视艺术学

提示：

- 1、请将所有答案写于答题纸上，写在试题上的不给分；
- 2、请填写准考证号后 6 位：_____。
- 3、试题共分三部分。音乐学专业考生只需回答第一部分，美术学专业考生只需回答第二部分中相关方向的部分，广播电视艺术学专业考生只需回答第三部分。

第一部分：音乐学试题

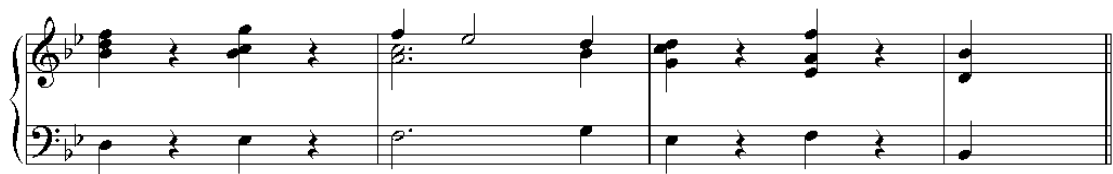
一、选择题：（选 5 小题，每小题 6 分，共 30 分）

1. 同主音大小调；
2. 和弦外音；
3. 开放排列法；
4. 正格终止；
5. 音色；
6. 音乐作品结构的补充；
7. 曲式组合原则；
8. 音乐织体

二、和声分析：（共 2 小题，每小题 15 分，共 30 分）

1.

2.



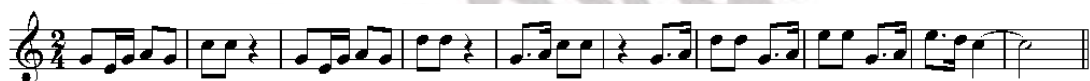
三、主题分析（共 2 小题，每小题 10 分，共 20 分）

说明下列各主题调性以及发展手法。

1.



2.



四、曲式分析（共 2 小题，每小题 15 分，共 30 分）

使用图表和文字说明下列乐曲的曲式名称、结构关系及材料等。

1.



The image displays five systems of musical notation for a piano piece. Each system consists of a treble clef staff and a bass clef staff. The first system begins with a triplet of eighth notes in the treble and a bass line with a triplet of eighth notes. The second system features a dense texture of sixteenth notes in the treble and a bass line with quarter notes. The third system shows a treble staff with sixteenth-note patterns and a bass line with quarter notes. The fourth system continues with similar textures, including a 'trmn' (trill) marking. The fifth system concludes with a treble staff featuring sixteenth-note patterns and a bass line with quarter notes. Dynamics include 'p cresc.' in the first system, and 'trmn' markings are present in the third, fourth, and fifth systems.

五、综合论述题（共 40 分）

综合分析下列音乐作品，从主题、材料、结构以及个性特征等方面展开论述。

奏鸣曲 (Op.2 No.1 第一乐章)

贝多芬



Allegro

p

3

3

5

sf

3

sf

3

ff

p

10

3

15

20

f

p

25

30

Musical score for piano, measures 25-60. The score is in G minor (three flats) and 3/4 time. It consists of six systems of music, each with a treble and bass clef staff. Measure numbers 35, 40, 45, 50, 55, and 60 are indicated at the start of their respective systems. Dynamics include *f*, *p*, *sf*, *ff*, and *fp*. Performance markings include *com espres-* and *stone*. The score features various rhythmic patterns, including eighth and sixteenth notes, and rests. A double bar line with repeat dots appears at the end of the fifth system.

Musical score for piano, measures 65-85. The score is written in G minor (three flats) and 3/4 time. It consists of six systems of two staves each (treble and bass clef). Measure numbers 65, 70, 75, 80, and 85 are indicated at the beginning of their respective systems. Dynamics include *sf* (sforzando) and *(s)f*. Trills (*tr*) are marked above notes in measures 85, 86, and 87. The piece concludes with a final chord in measure 88.



4

90

95

100

105

110

115

pp

pp

f

sf

sf

p

p



120

125

130

135

140

145

150

您所下载的资料来源于 kaoyan.com 考研资料下载中心

获取更多考研资料, 请访问 <http://download.kaoyan.com>

第三部分: 美术学试题

中外美术史: (美术理论与美术教育方向考生回答以下试题)

一、选择题: (共 10 小题, 每小题 5 分, 共 50 分)

