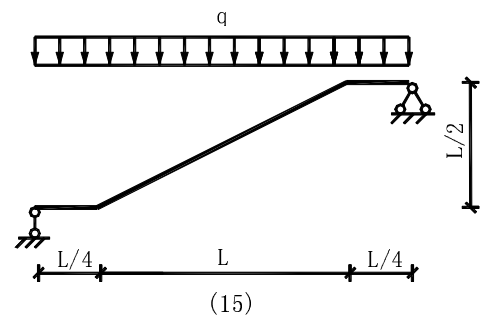
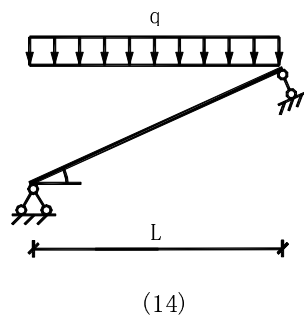
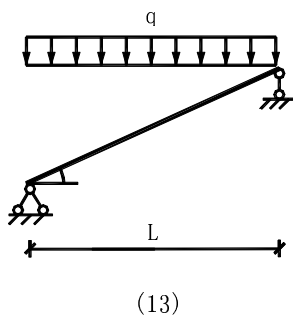
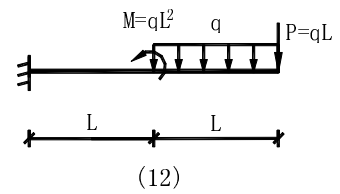
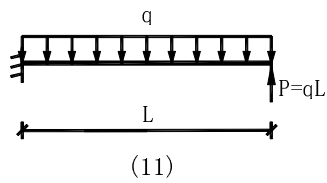
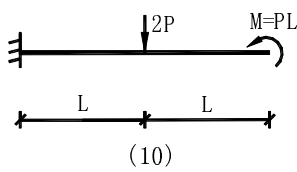
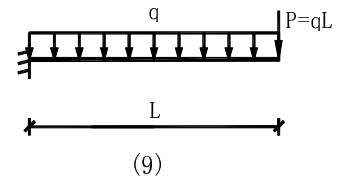
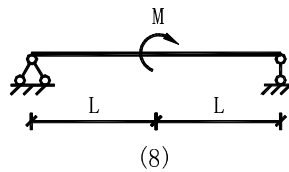
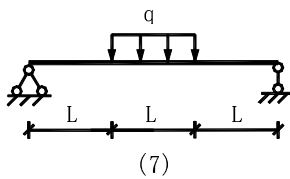
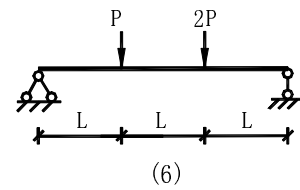
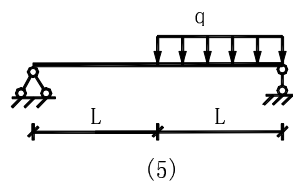
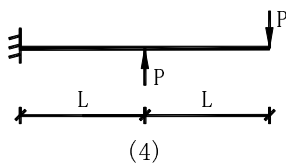
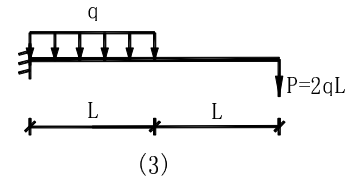
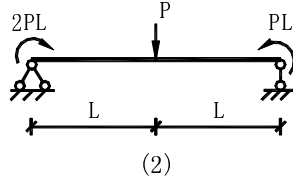
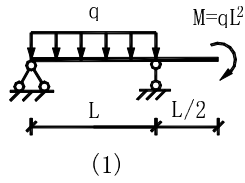
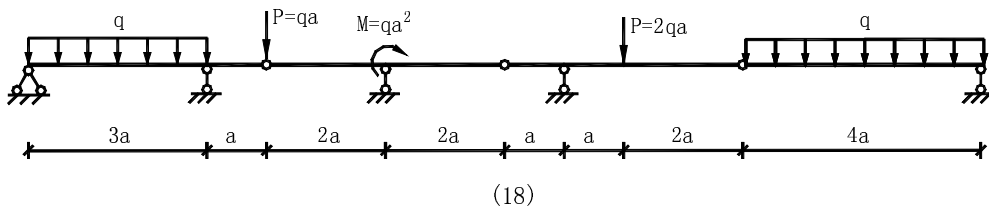
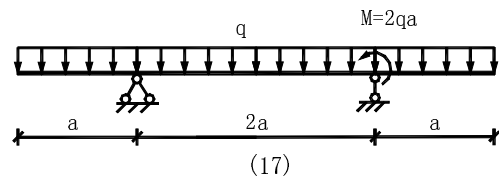
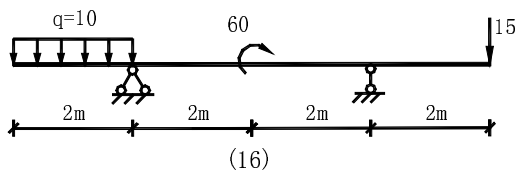


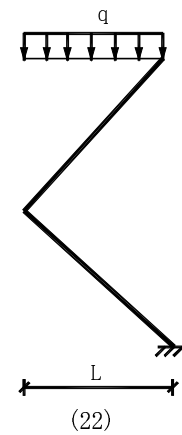
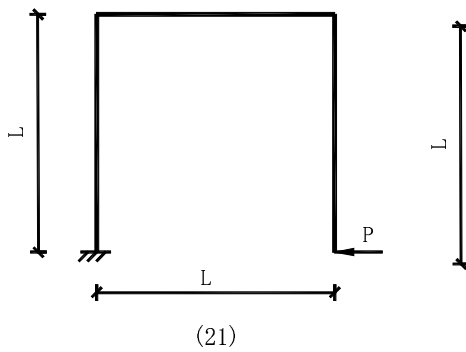
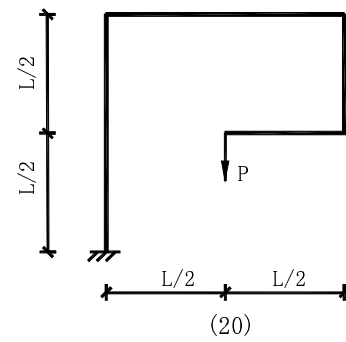
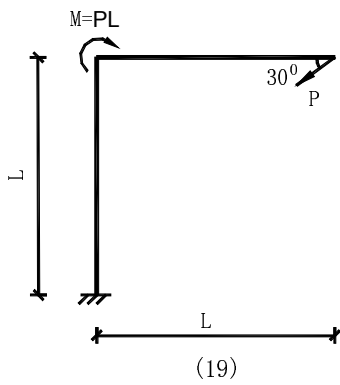
静定结构弯矩图百题练习

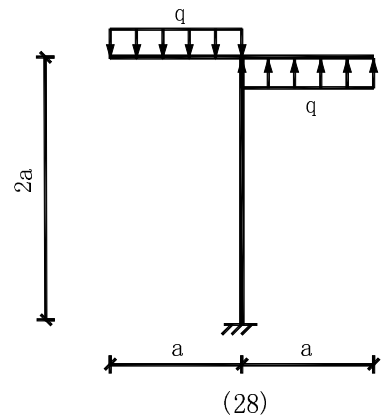
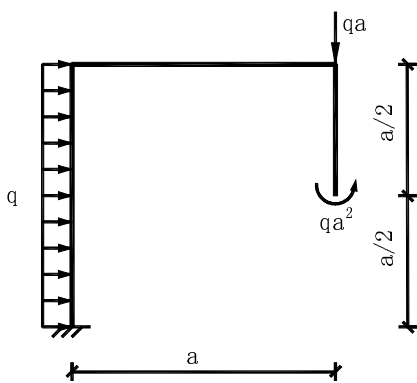
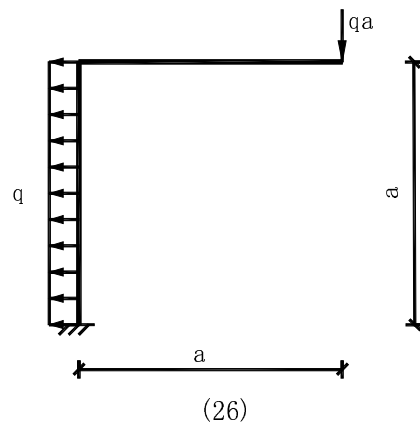
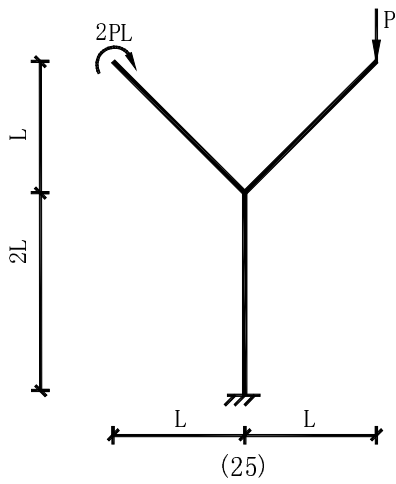
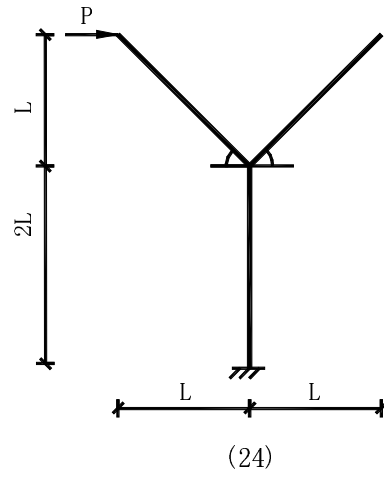
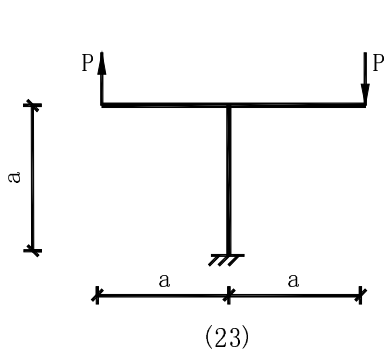
一、梁

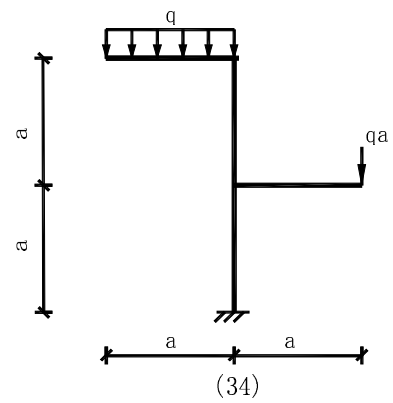
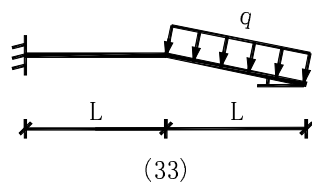
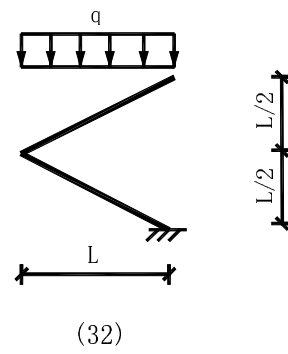
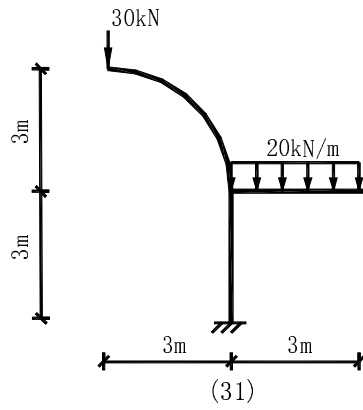
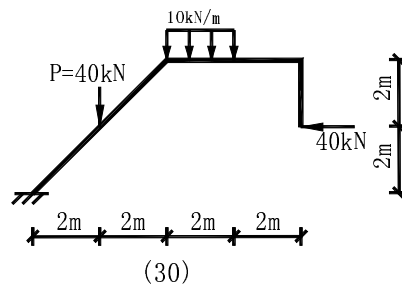
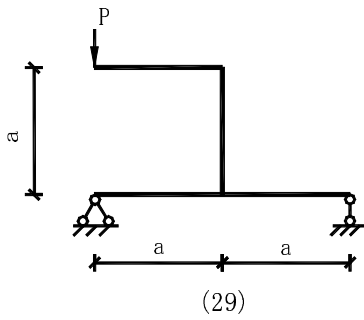


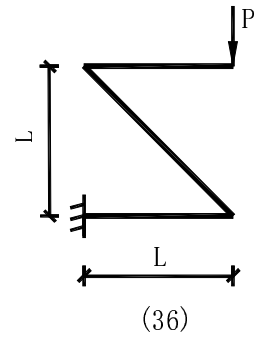
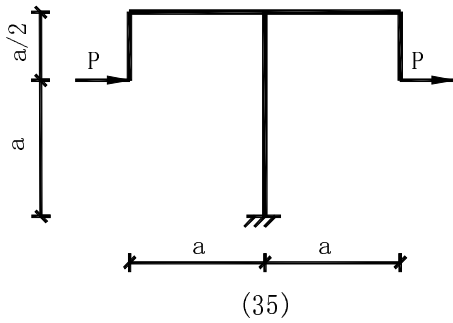


二、悬臂式刚架

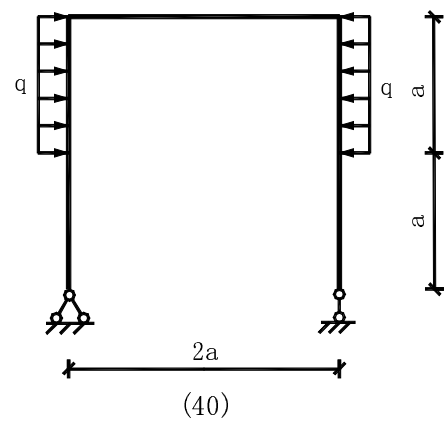
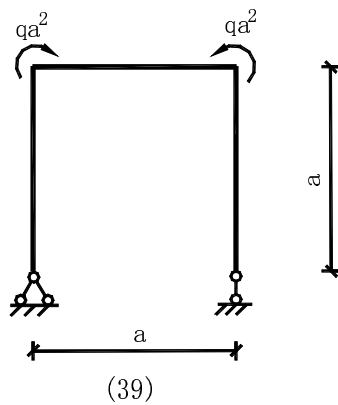
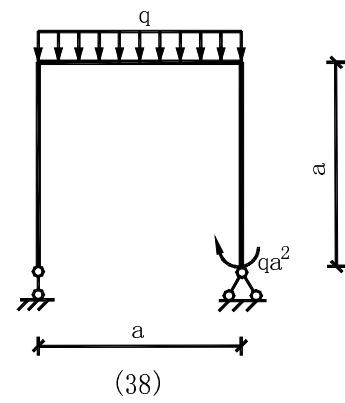
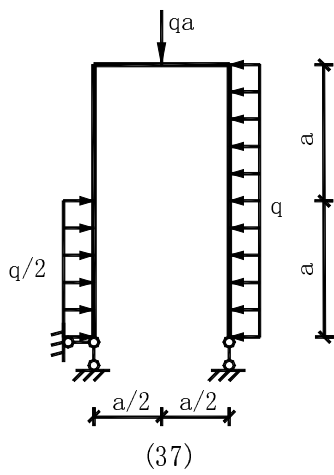


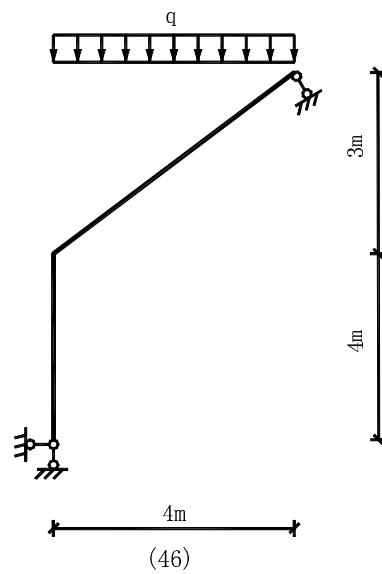
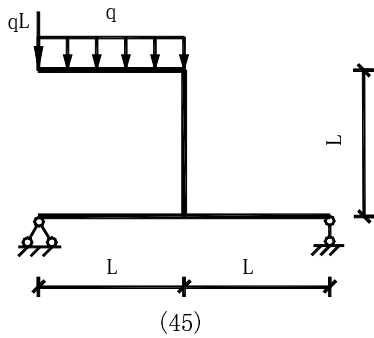
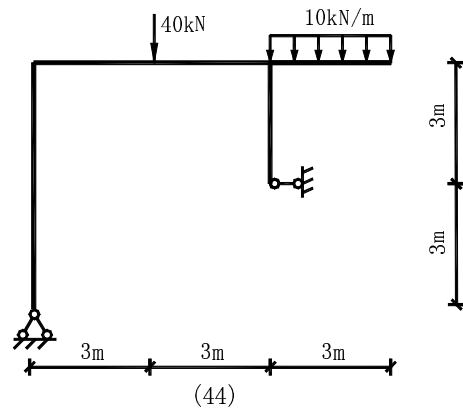
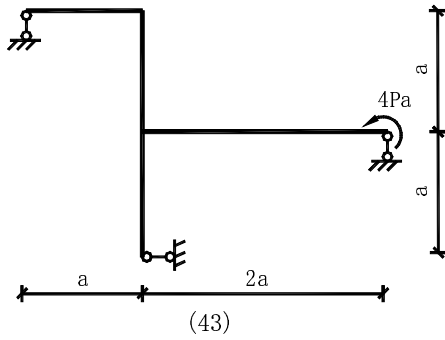
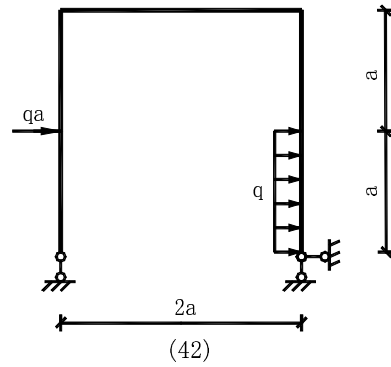
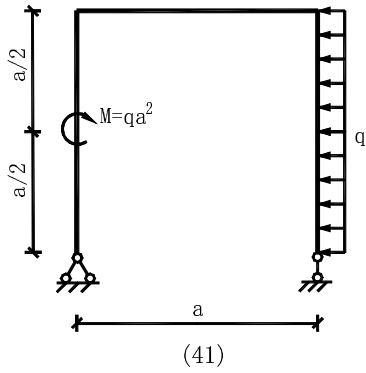


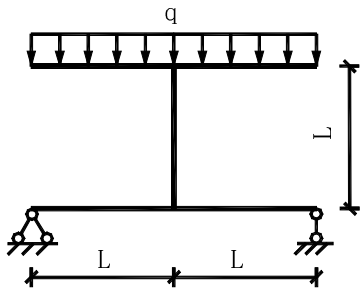




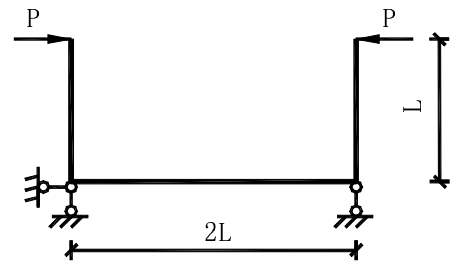
三、简支式刚架



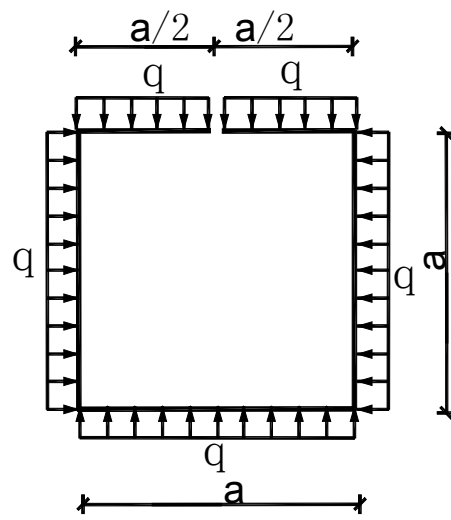




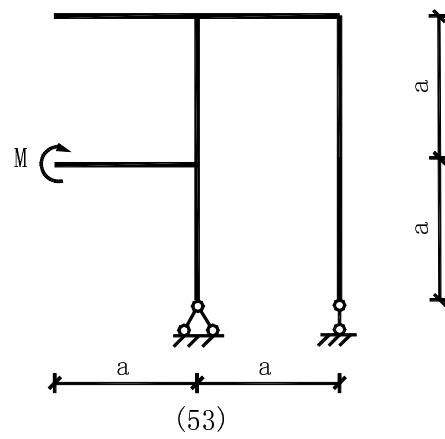
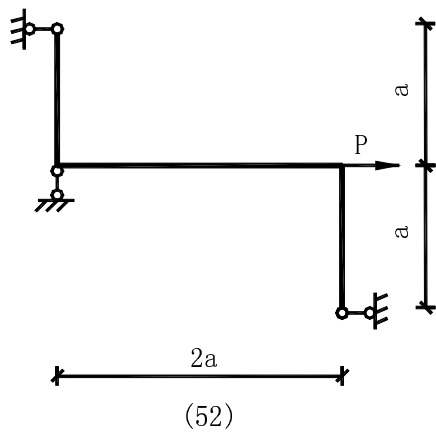
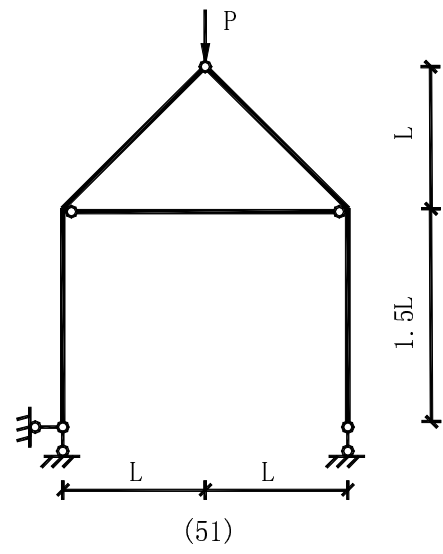
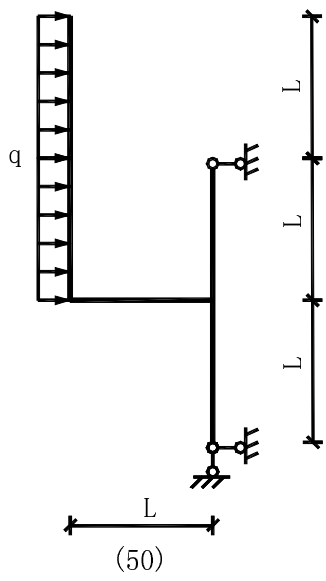
(47)

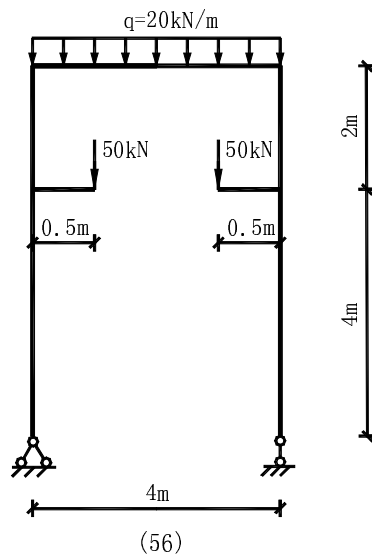
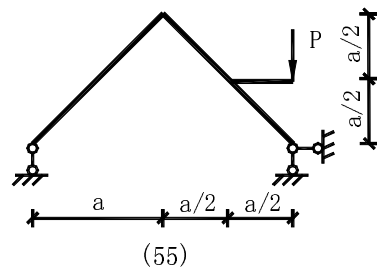
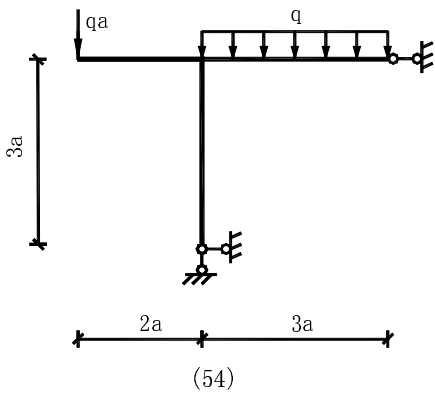


(48)

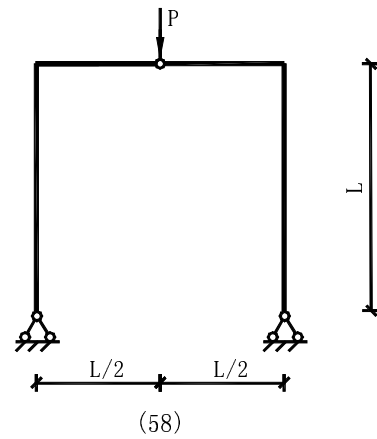
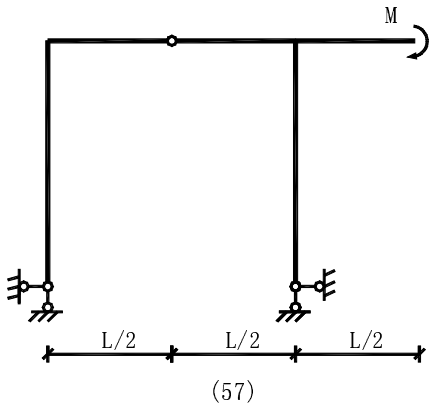


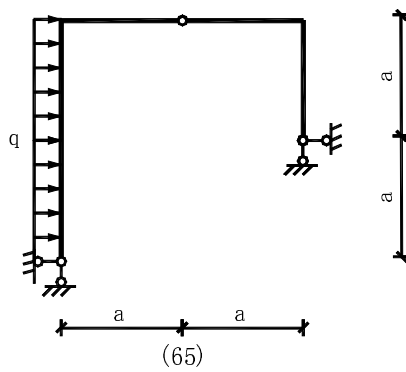
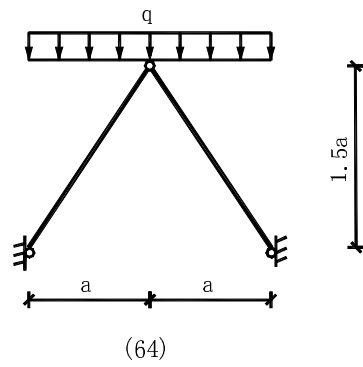
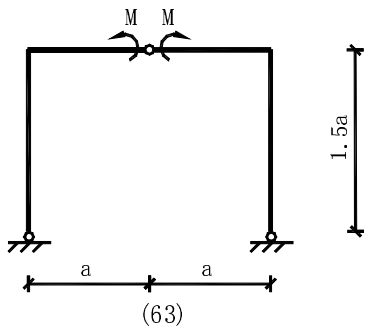
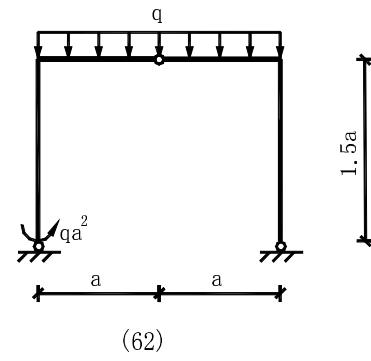
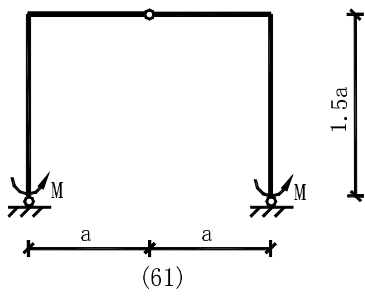
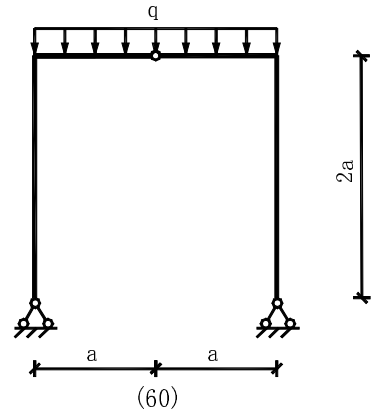
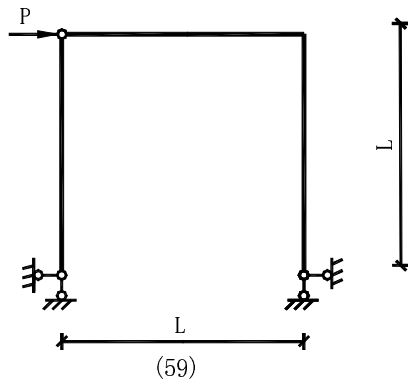
(49)

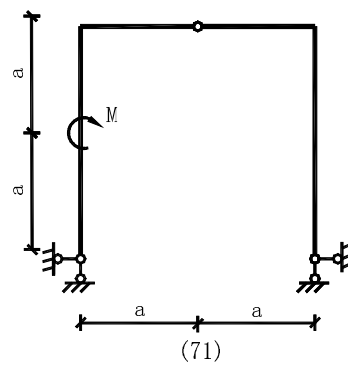
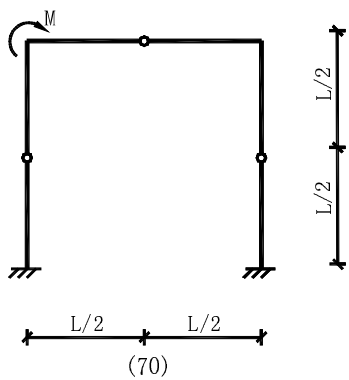
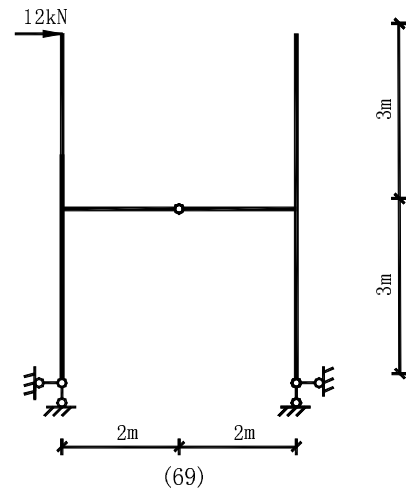
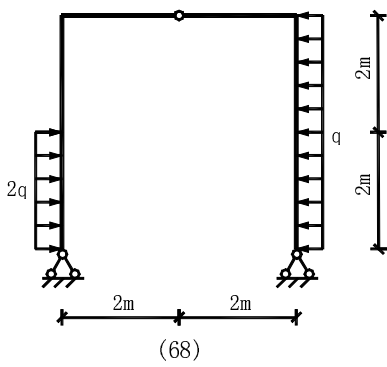
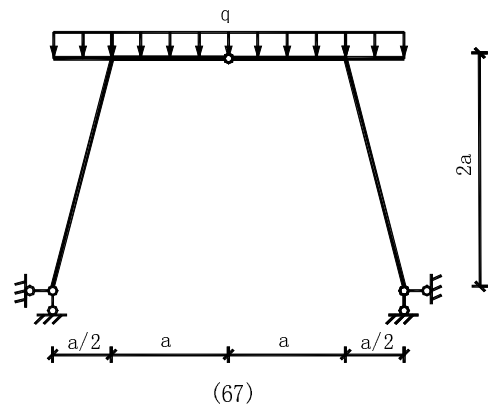
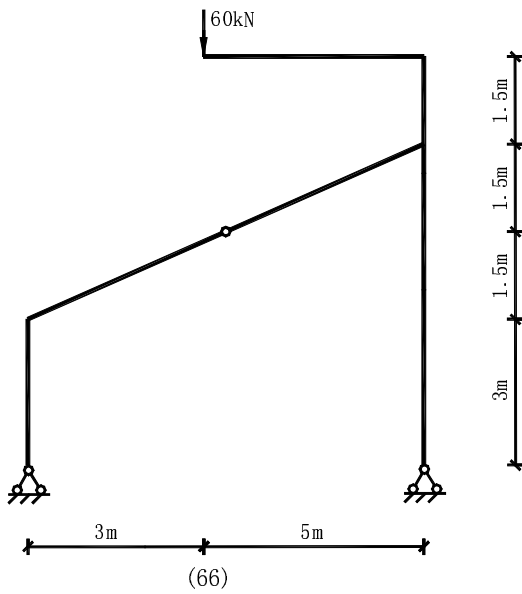


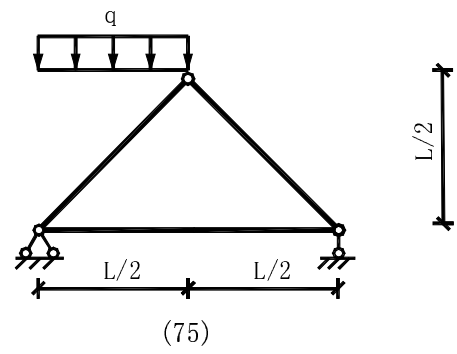
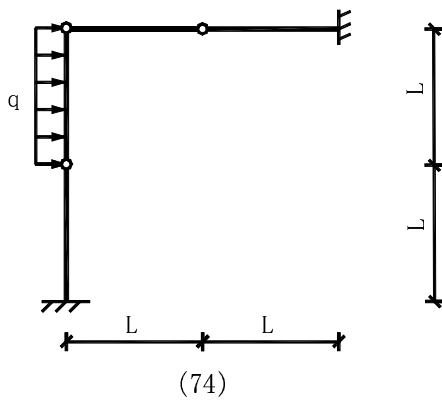
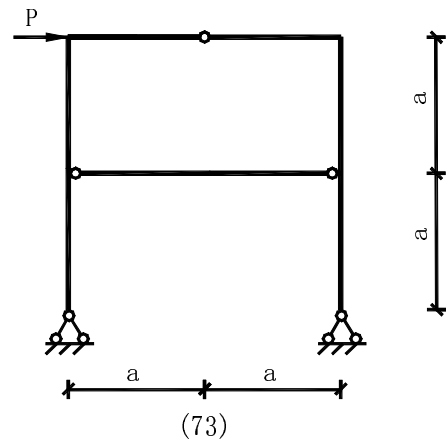
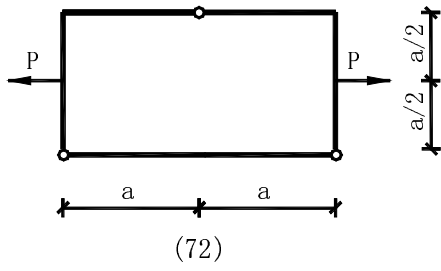


四、三铰式刚架

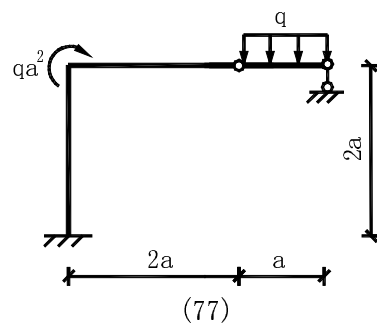
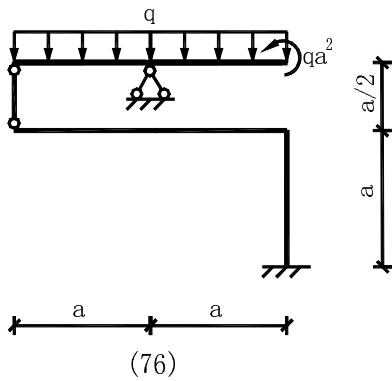


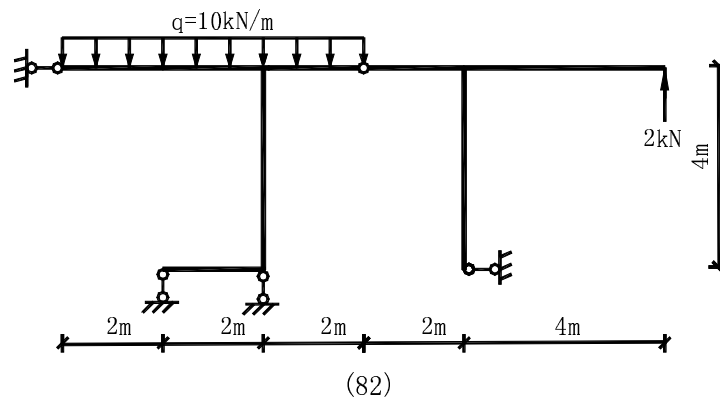
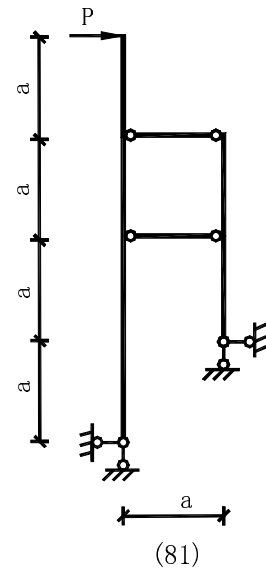
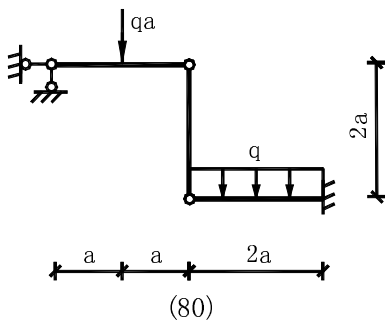
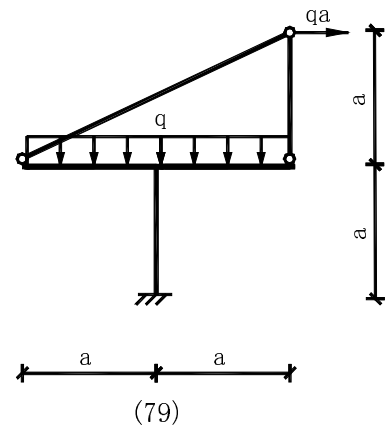
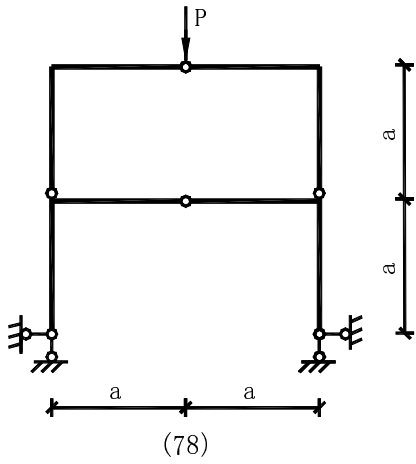


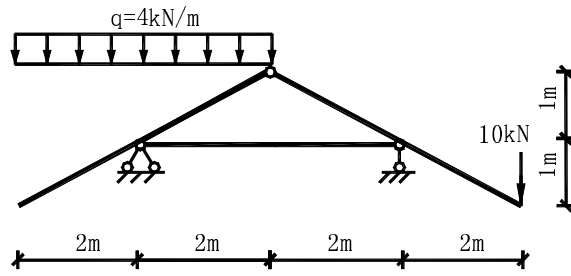




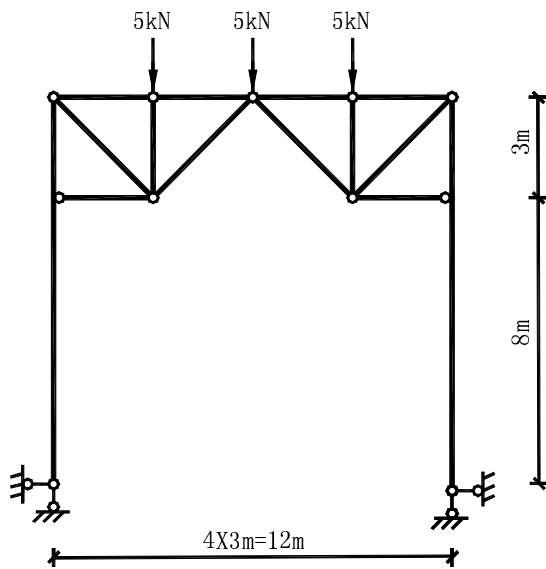
五、复杂刚架



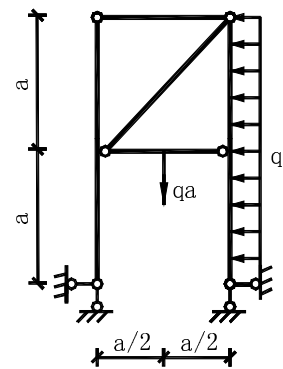




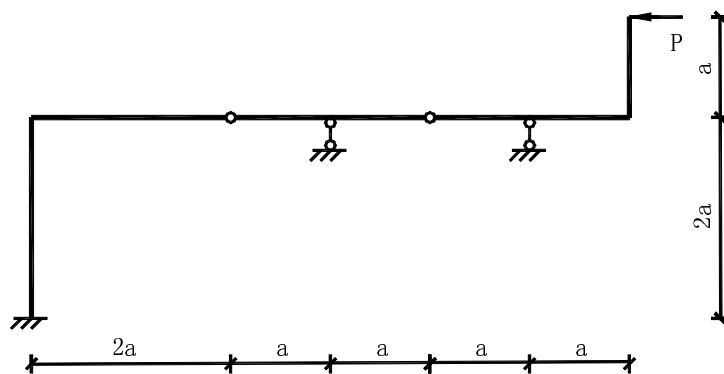
(83)



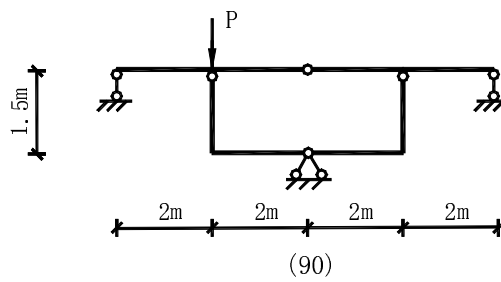
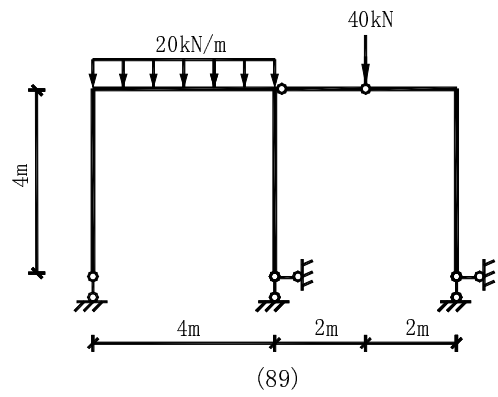
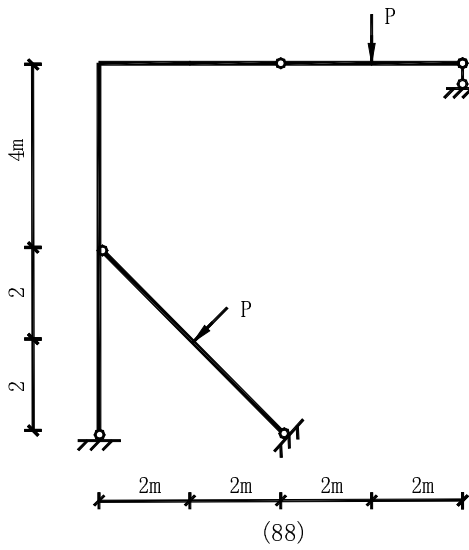
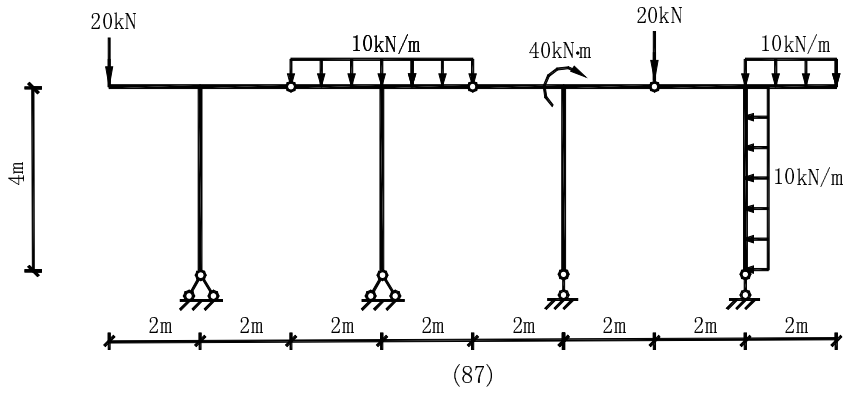
(84)

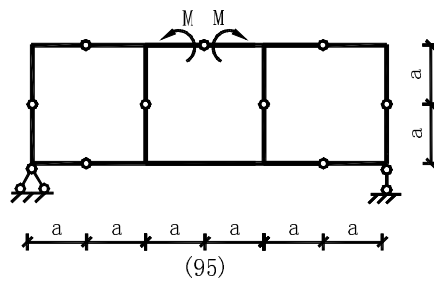
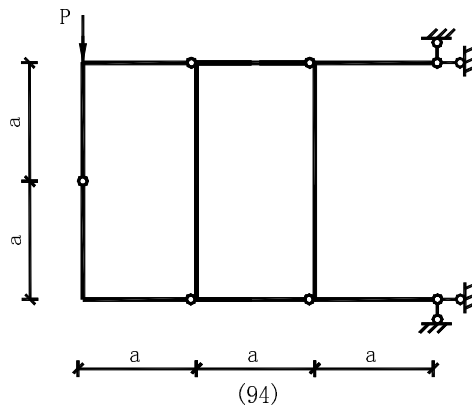
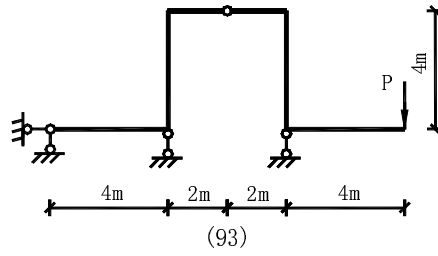
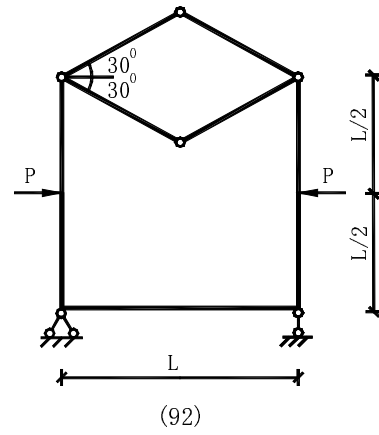
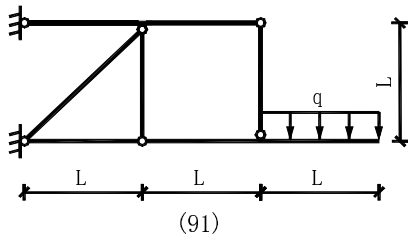


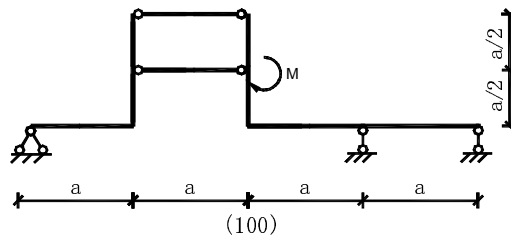
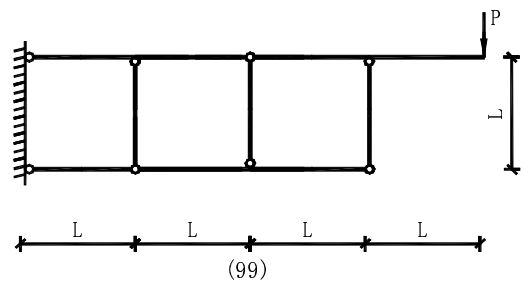
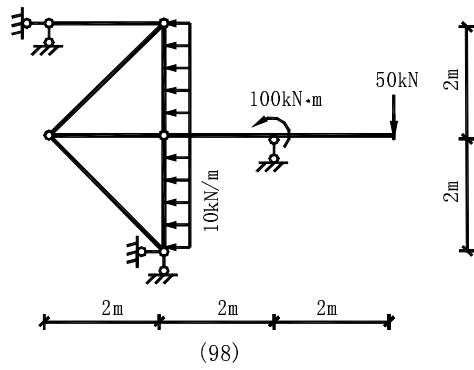
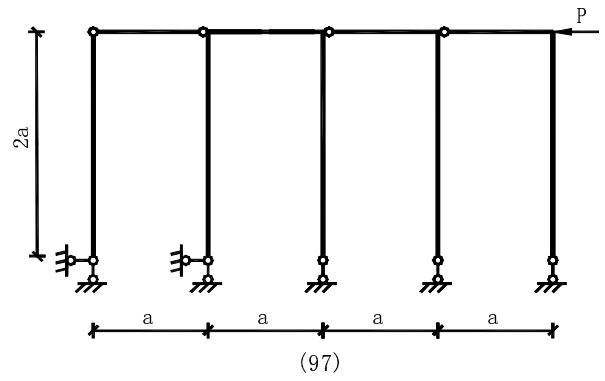
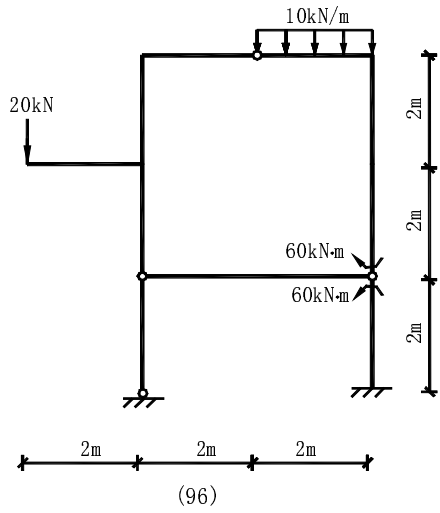
(85)



(86)

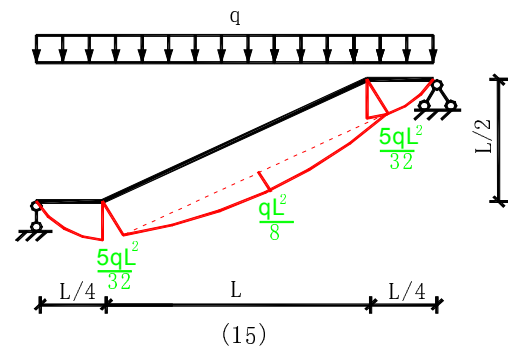
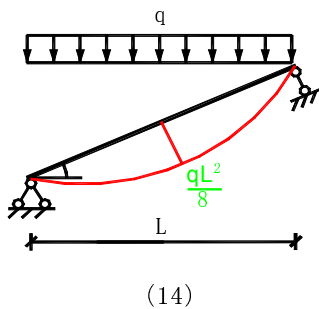
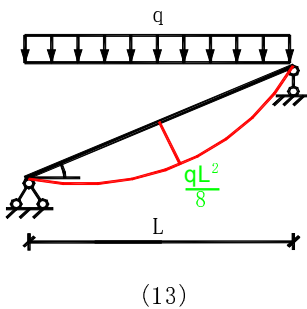
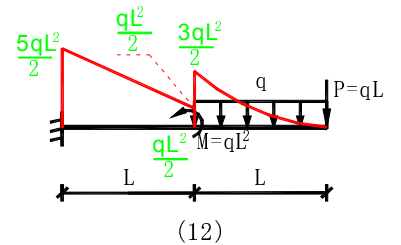
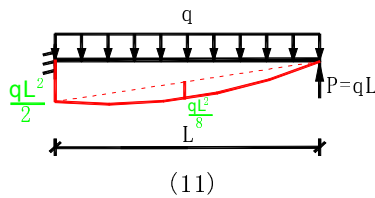
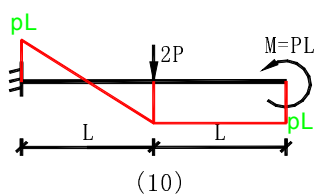
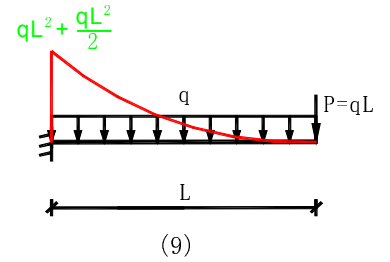
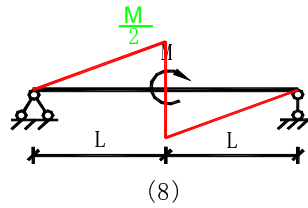
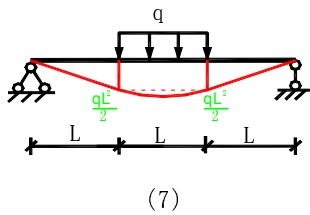
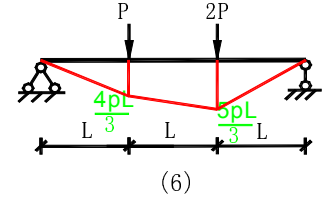
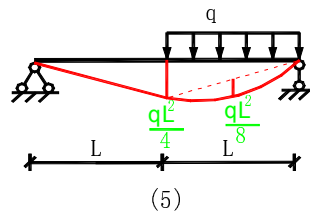
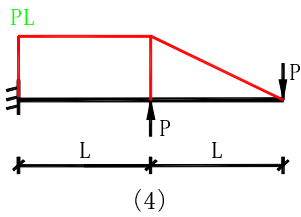
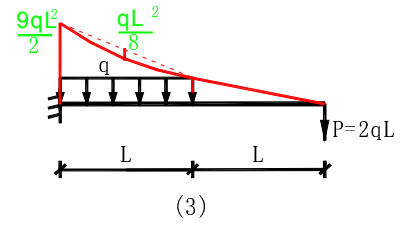
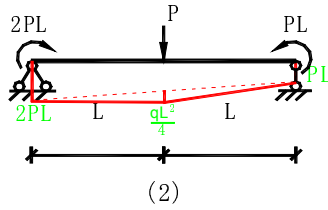
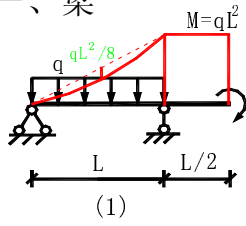


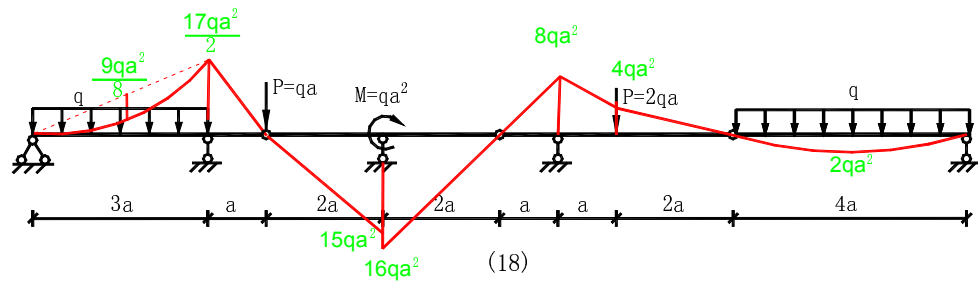
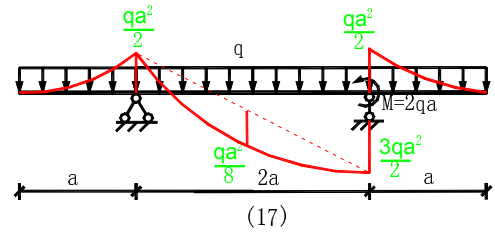
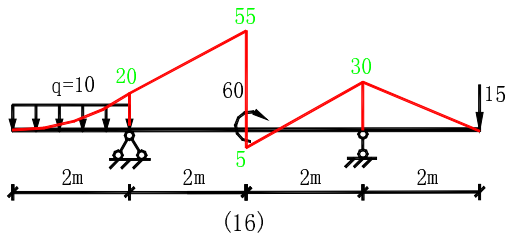




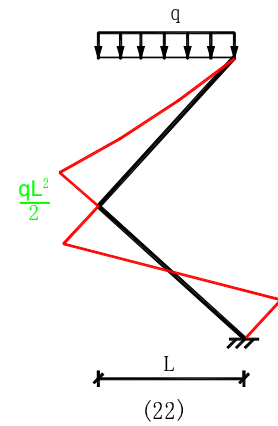
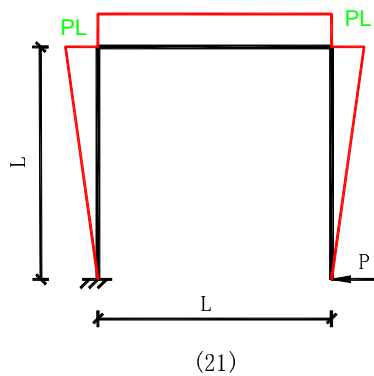
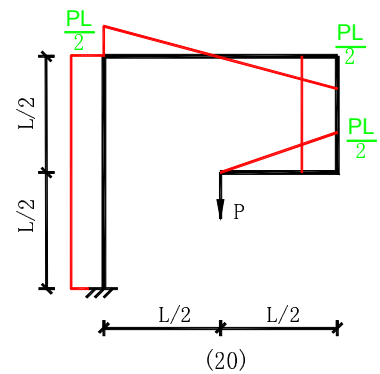
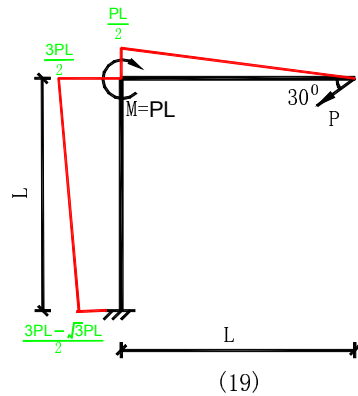
静定结构弯矩图百题练习答案

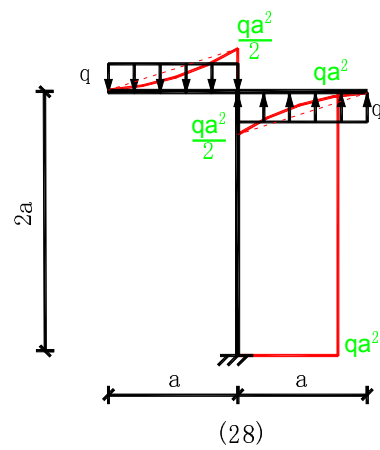
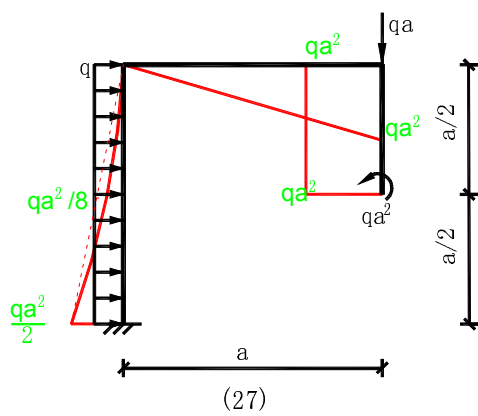
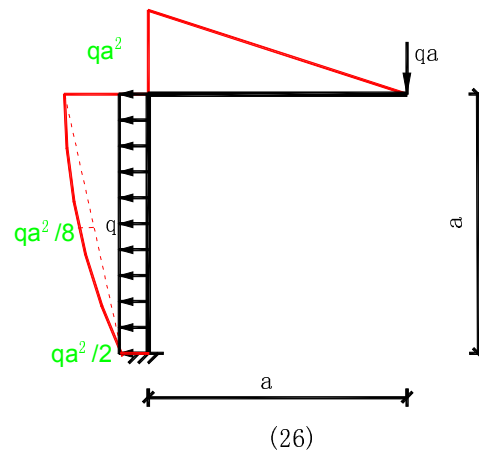
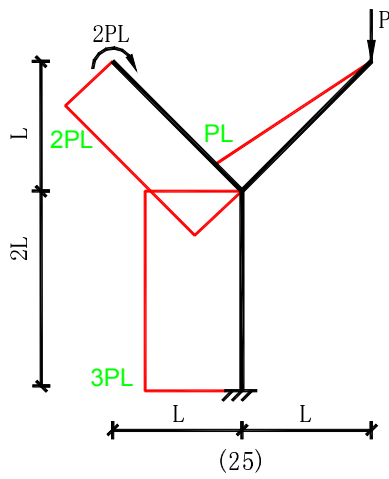
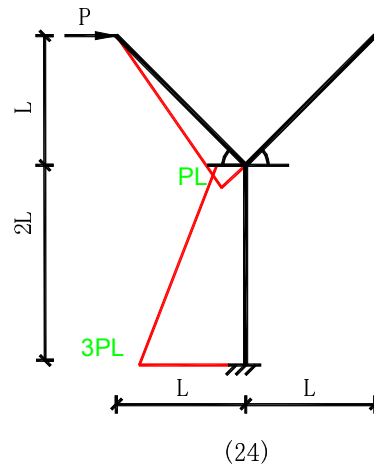
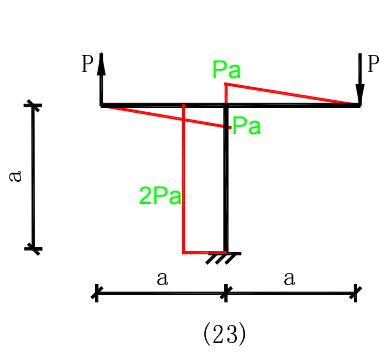
一、梁

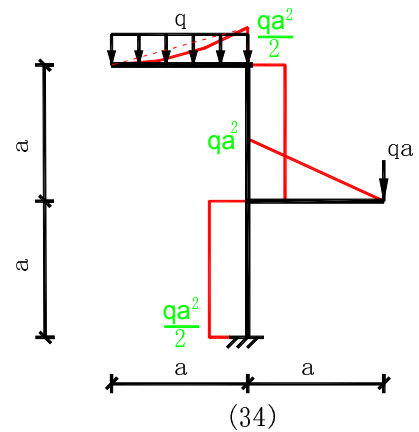
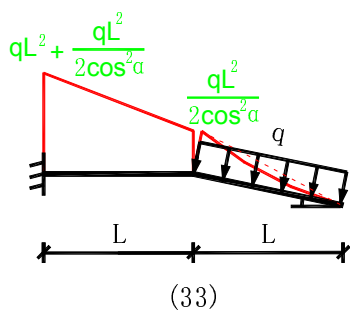
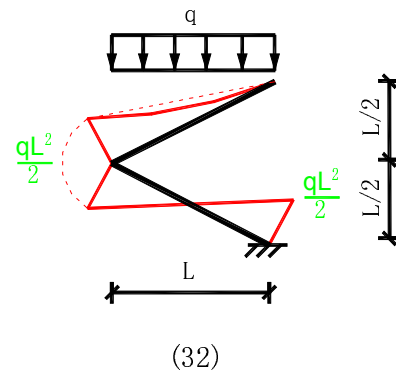
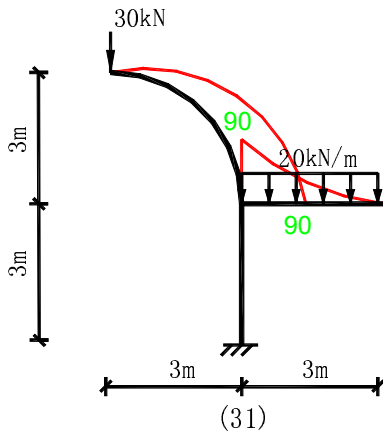
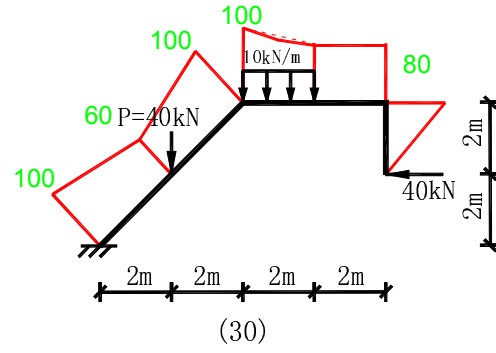
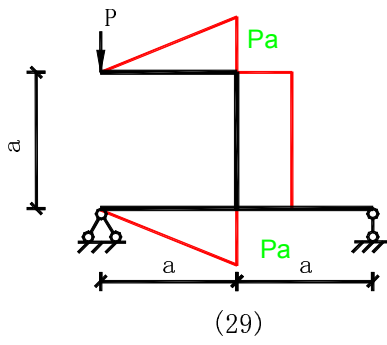


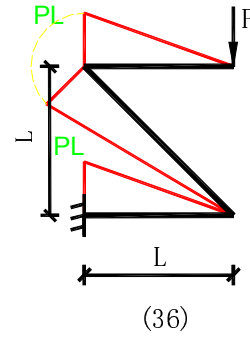
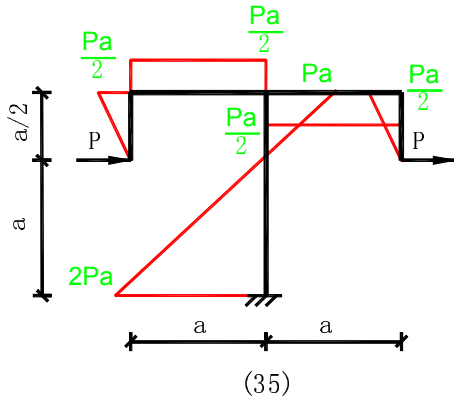


二、悬臂式刚架

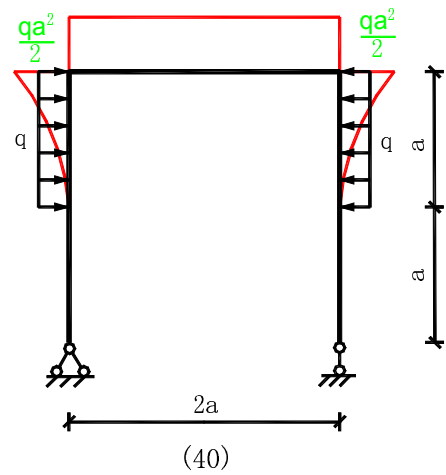
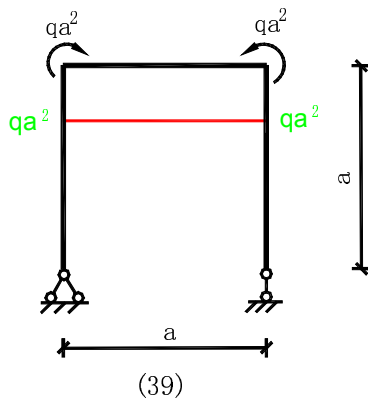
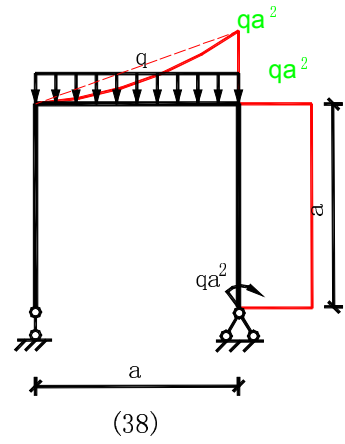
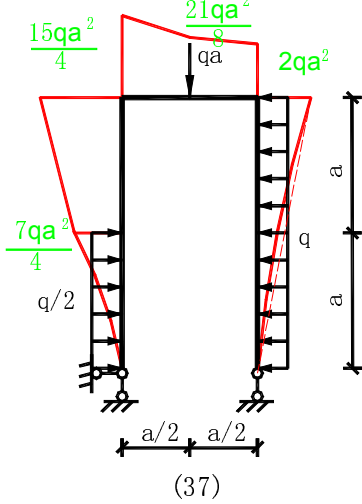


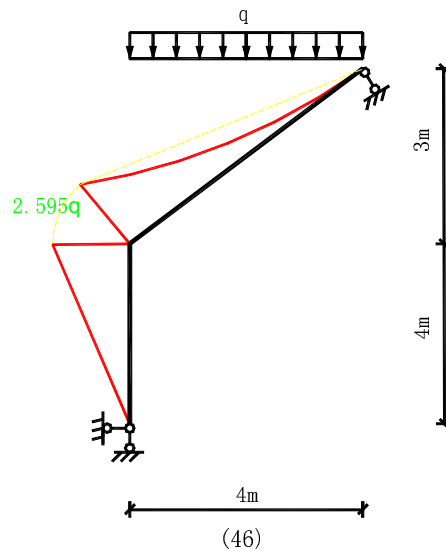
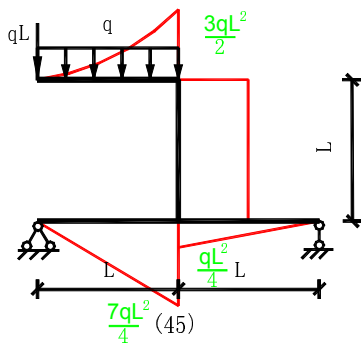
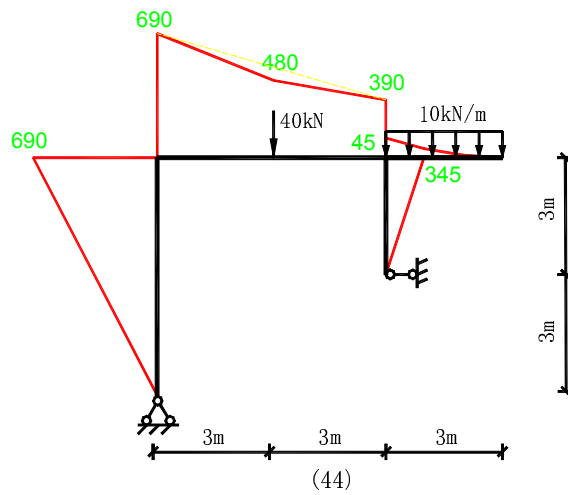
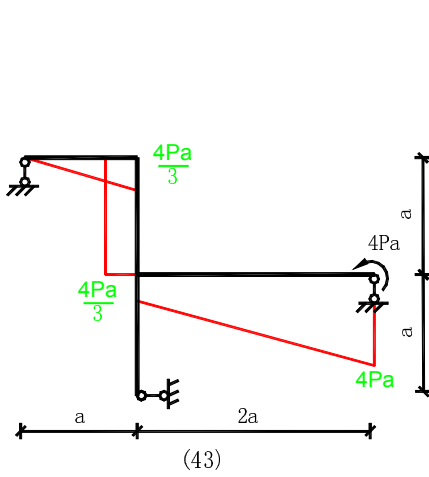
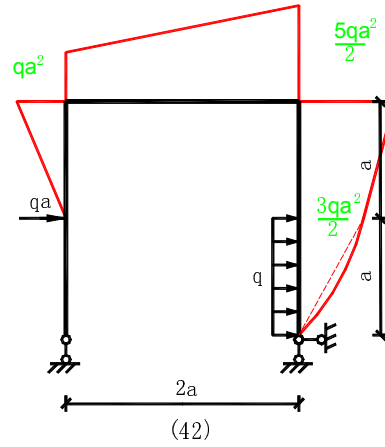
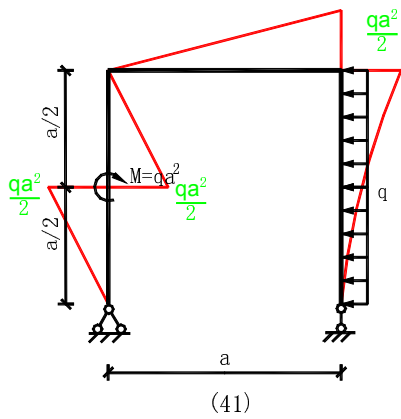


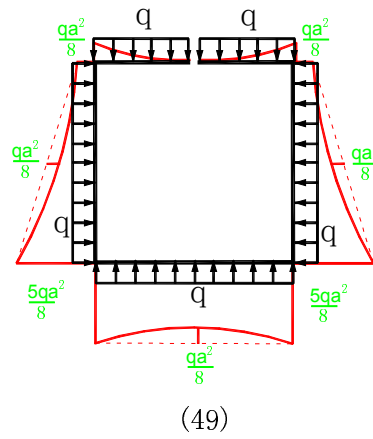
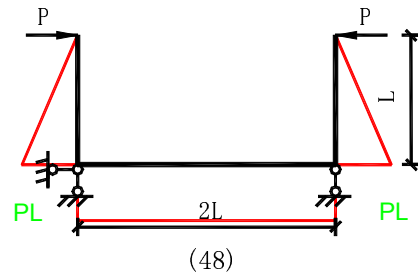
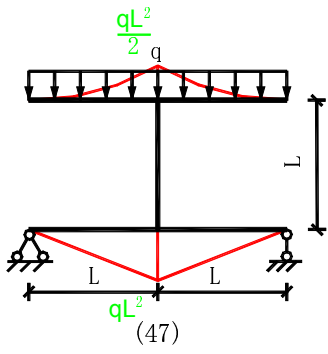


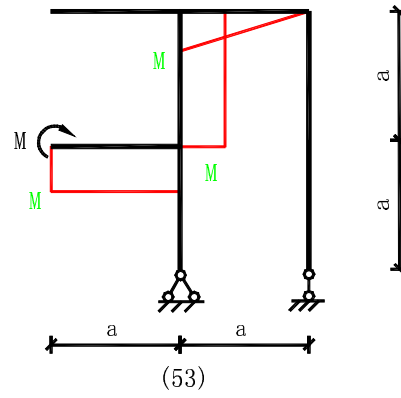
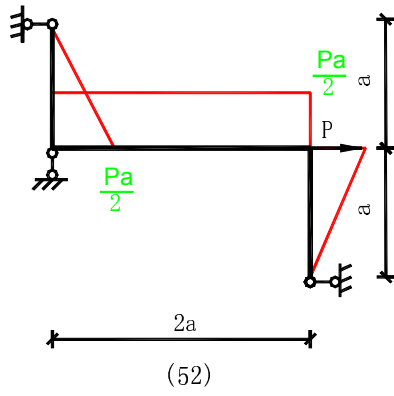
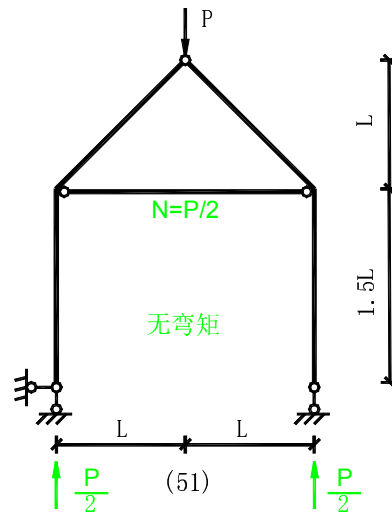
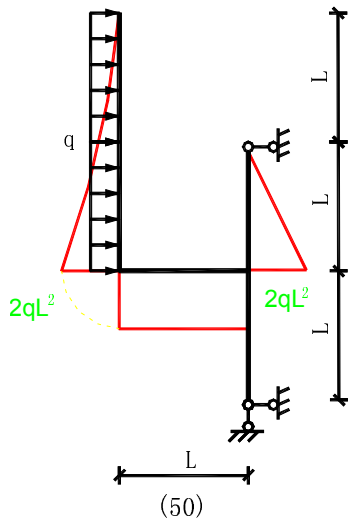


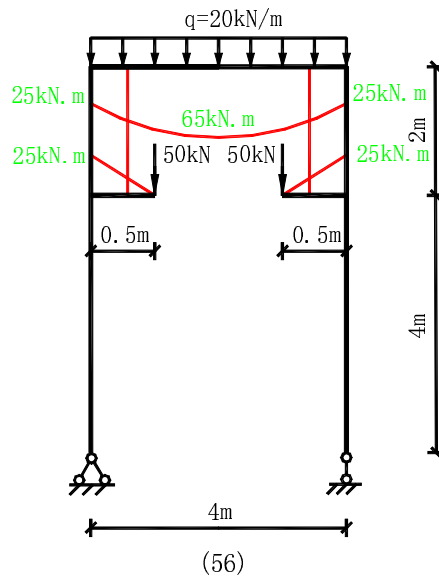
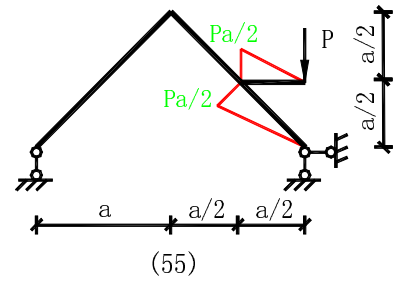
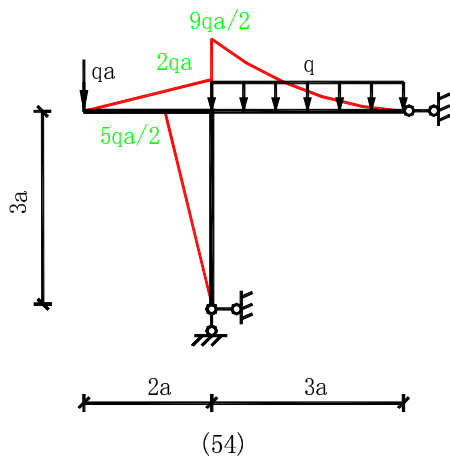
三、简支式刚架



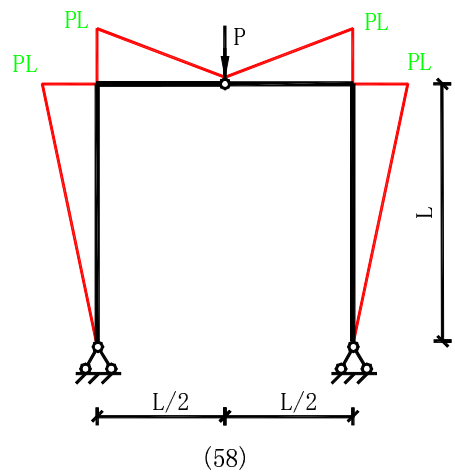
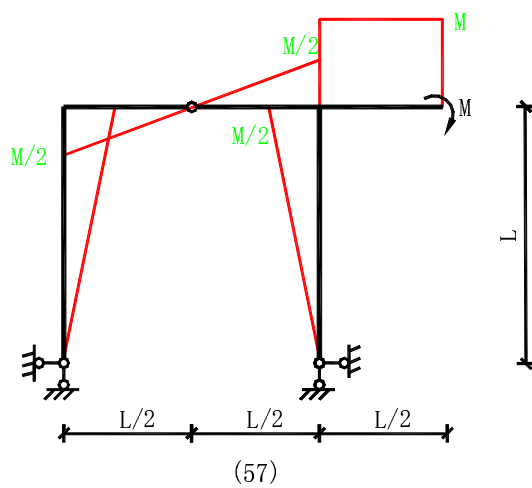


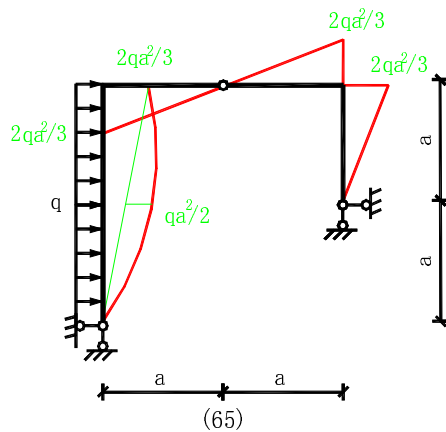
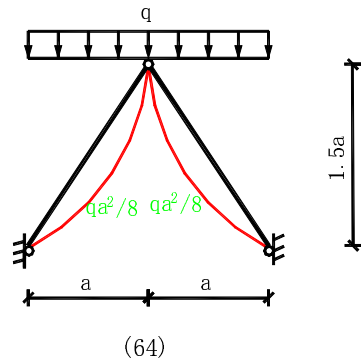
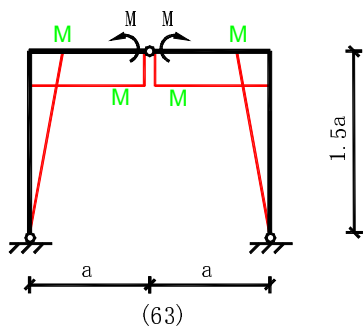
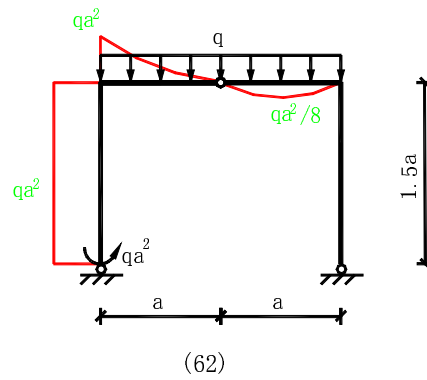
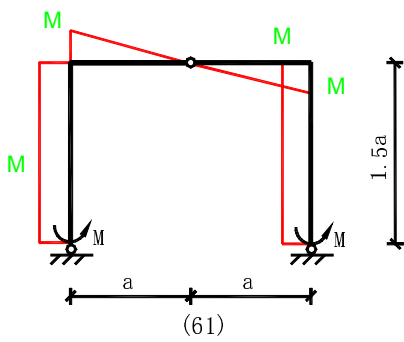
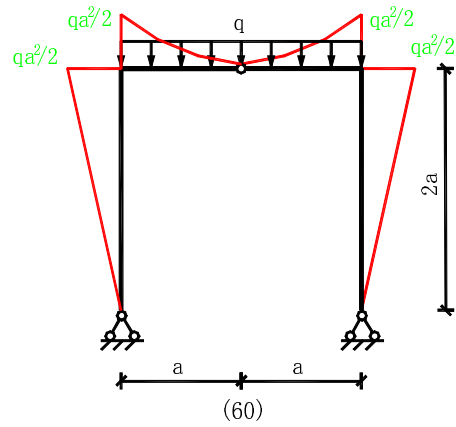
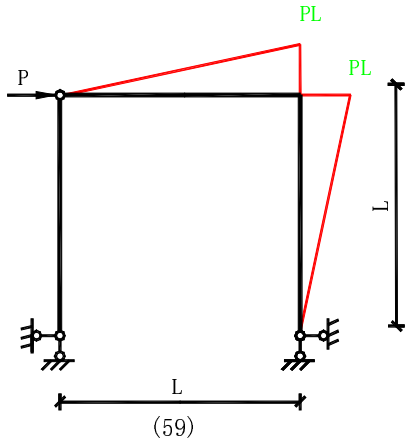


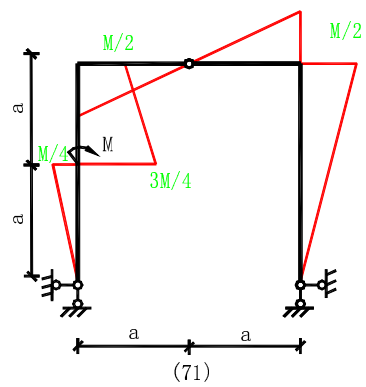
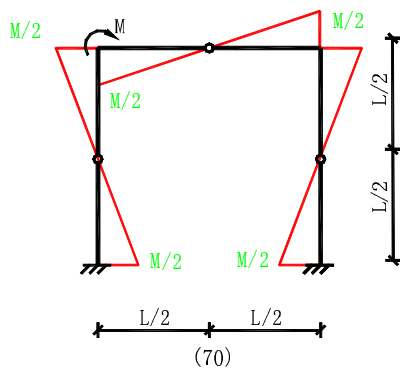
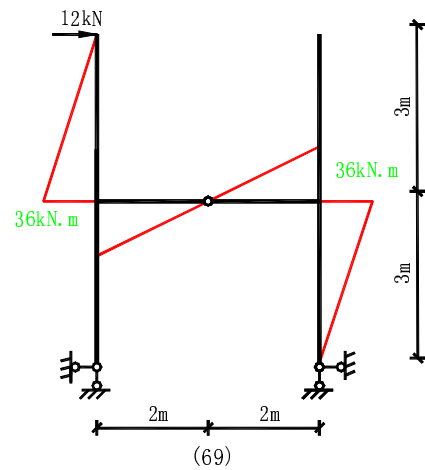
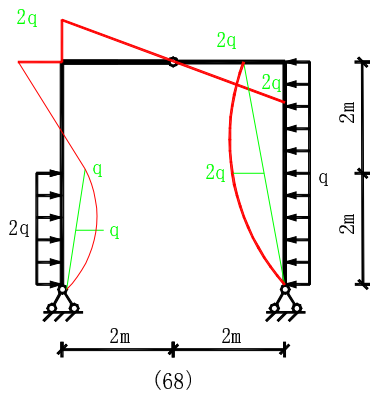
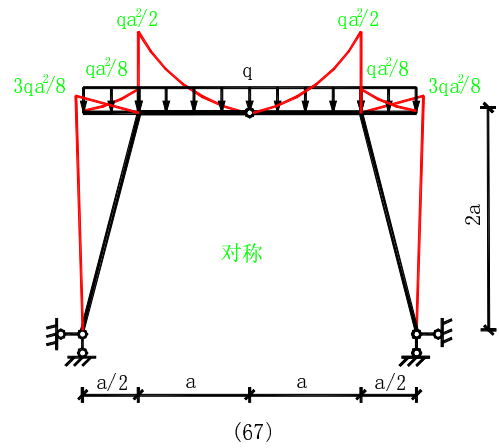
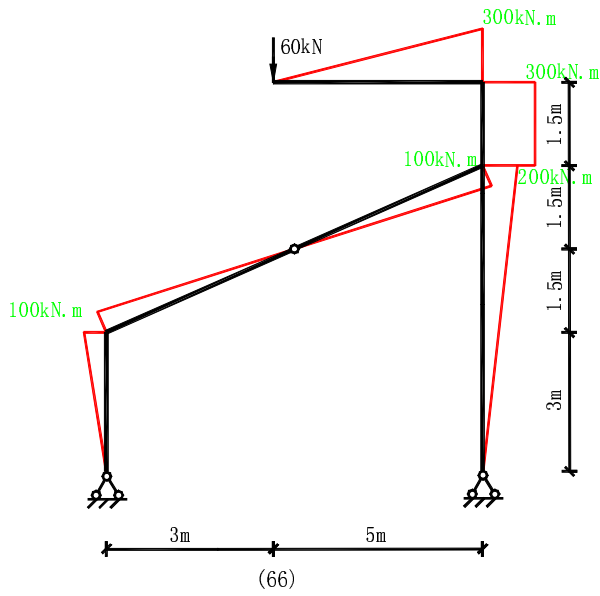


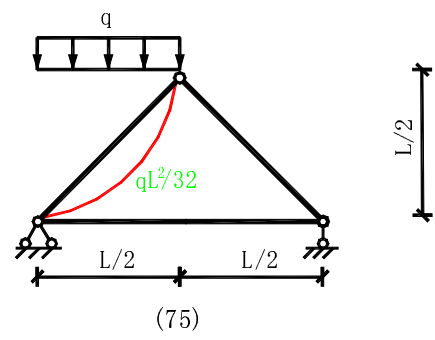
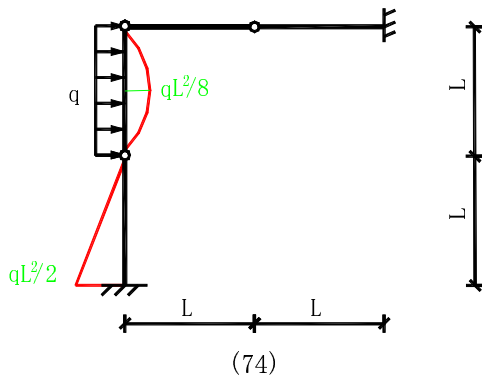
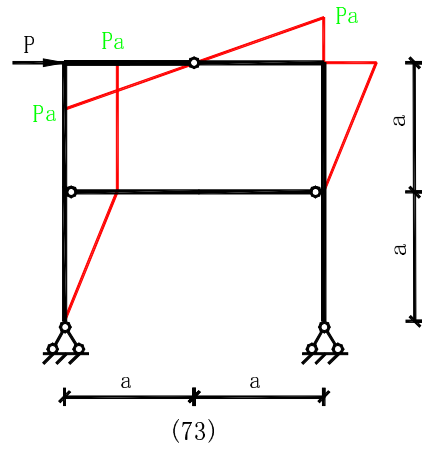
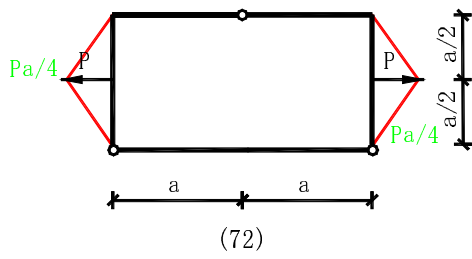


四、三铰式刚架









五、复杂刚架

